

Part 1. Read the following advertisement and choose the option that best fits each of the numbered blanks from 1 to 6.

Tired of Takeout? Become a KitchenHero!

Wish you could cook delicious meals (1) _____ home without the stress?

KitchenHero delivers fresh, pre-portioned ingredients and easy-to-follow recipes right to your door, making (2) _____ a breeze!

No more (3) _____ runs or complicated prep work. Our chef-designed recipes cater to all tastes, whether you crave (4) _____ vegetarian dishes or hearty comfort food.

(5) _____ for busy individuals and families, KitchenHero helps you regain control of your kitchen and discover the joy of (6) _____ home-cooked meals.

Visit our website today to learn more!



- | | | | | |
|--------------------|------------------------------|------------------------------|------------------------------|------------------------------|
| Question 1: | A. on | B. by | C. with | D. at |
| Question 2: | A. cooked | B. to cook | C. cook | D. cooking |
| Question 3: | A. grocery store last-minute | B. store grocery last-minute | C. last-minute grocery store | D. last-minute store grocery |
| Question 4: | A. flavorfully | B. flavored | C. flavor | D. flavorful |
| Question 5: | A. To design | B. Designed | C. Having designed | D. Designing |
| Question 6: | A. doing | B. preparing | C. making | D. getting |

Part 2. Read the following leaflet and choose the option that best fits each of the numbered blanks from 7 to 12.

Recognizing and Preventing Substance Abuse

Concerned about substance abuse? Learn to spot the signs and take proactive steps. Substance abuse affects (7) _____ lives, and understanding it is the first step towards prevention. (8) _____ of the common signs include sudden mood swings, neglecting responsibilities, changes in sleep patterns, and withdrawal from social activities. These behaviors can significantly impact an individual's physical and mental (9) _____.

If you notice these signs in someone you care about, don't hesitate to (10) _____. Open communication is crucial. (11) _____ accusing or judging, express your concern and offer support. Encourage them to seek professional help from a counselor, therapist, or support group.

Prevention is key. Educate yourself and (12) _____ about the risks associated with substance abuse. Promoting healthy coping mechanisms, like exercise, mindfulness, and hobbies, can provide positive alternatives. Building strong support networks also plays a vital role in preventing substance abuse. Remember, taking action can save lives.

- | | | | | |
|--------------------|---------------|-------------|-------------|-----------|
| Question 7: | A. more | B. most | C. many | D. much |
| Question 8: | A. A few | B. A little | C. Many | D. Much |
| Question 9: | A. appearance | B. health | C. attitude | D. wealth |

- Question 10:** A. reach up B. reach across C. reach on D. reach out
- Question 11:** A. Because of B. In spite of C. In case of D. Instead of
- Question 12:** A. the other B. the others C. others D. another

Part 3. Choose the option that indicate the best arrangement of utterances or sentences to make a meaningful exchange or text in each of the following questions from 13 to 17.

- Question 13:** a. Sarah: Actually, it's a sustainable energy startup. Seems like he's going all-in on green tech.
b. John: No way! What is it this time? Another space exploration venture?
c. Sarah: Did you hear? Elon Musk just bought another company!
- A. b - a - c B. b - c - a C. c - b - a D. c - a - b
- Question 14:** a. Yumi: It's not just about drinking tea. It's about mindfulness, respect, and appreciating the beauty in everyday rituals.
b. Liam: Wow, I had no idea. What's the reasoning behind it all?
c. Yumi: Oh, they are! There's a specific way to prepare the tea, handle the utensils, even how to sit.
d. Liam: That's fascinating. I'd love to see a real tea ceremony sometime.
e. Liam: I'm learning about Japanese tea ceremonies in my art history class. They seem so intricate.
- A. d - e - a - b - c B. b - c - e - a - d C. c - e - d - b - a D. e - c - b - a - d
- Question 15:** Hi David,
a. I know you appreciate handcrafted items, so I thought you might like to see it.
b. I even added some intricate carvings on the sides.
c. Maybe we can even work on a project together sometime!
d. I built a beautiful birdhouse from scratch, and I'm so proud of how it turned out.
e. I just finished a new woodworking project and had to share it with you!
Best,
Olivia
- A. c - e - d - b - a B. e - b - c - a - d C. e - d - b - a - c D. c - d - b - a - e
- Question 16:** a. Whether it's a massive stadium show or an intimate club gig, the raw emotion and shared experience are truly special.
b. The roar of the crowd, the anticipation in the air, and the shared passion for the music create an unforgettable experience.
c. Concerts remind us of the power of music to unite and inspire.
d. There's nothing quite like the electric energy of a live concert.
e. From the first chord to the final encore, concerts offer a chance to connect with others and escape into the power of music.
- A. b - c - d - a - e B. c - d - b - e - a C. d - b - e - a - c D. b - d - e - a - c
- Question 17:** a. These documentaries often go beyond the surface, providing intimate glimpses into their personal lives and struggles.
b. The recent surge in popularity of biographical documentaries speaks volumes about our fascination with real-life stories.
c. This trend reflects a desire for authenticity and a deeper connection with the people who have shaped our world.
d. Platforms like Netflix and Amazon Prime offer a diverse range of biographical content, covering icons like Michelle Obama and Elon Musk.
e. Through their captivating narratives, we gain a newfound appreciation for their achievements and the challenges they overcame.
- A. d - e - b - c - a B. e - d - b - c - a C. b - c - d - e - a D. b - d - c - a - e

Part 4. Read the following passage about 3D printing and its impact on manufacturing and choose the option that best fits each of the numbered blanks from 18 to 22.

3D printing, also known as additive manufacturing, is rapidly transforming the manufacturing industry and has the potential to revolutionize how we create products in the future. (18) _____, 3D printing builds objects layer by layer from a digital design. This process, (19) _____, allows for the creation of highly complex and customized designs with incredible precision.

One of the most significant advantages of 3D printing is its ability to produce parts on demand, reducing the need for large-scale production runs and expensive tooling. This is particularly beneficial for creating prototypes, specialized tools, and (20) _____, such as custom medical implants or aircraft components. The global 3D printing market size was valued at \$13.8 billion in 2021 and is projected to grow at a compound annual growth rate (CAGR) of 20.8% from 2022 to 2030, highlighting the increasing adoption of this technology across various industries.

Furthermore, 3D printing enables the use of a wider range of materials, including plastics, metals, ceramics, and even food. This versatility opens up new possibilities for product design and functionality. For example, aerospace companies are now using 3D printing to create lighter and stronger components for aircraft, (21) _____.

(22) _____. From personalized consumer goods to sustainable solutions for construction and healthcare, the potential applications of 3D printing are vast and continue to expand, shaping the future of manufacturing in exciting and innovative ways.

- Question 18:**
- A. Unlike traditional manufacturing, which often involves removing material from a larger block
 - B. Similar to traditional manufacturing, this often involves adding material to a smaller block
 - C. Unlike traditional manufacturing, which mostly focuses on mass production of identical items
 - D. In contrast to traditional manufacturing, it frequently requires assembling parts from various sources
- Question 19:**
- A. powered by complex algorithms and skilled craftsmanship
 - B. limited by the capabilities of traditional assembly lines
 - C. driven by computer-aided design (CAD) software
 - D. dependent on readily available raw materials and supply chains
- Question 20:**
- A. readily available commercial products in high demand
 - B. products designed for mass-market consumption
 - C. products with limited production runs
 - D. inexpensive and widely accessible consumer goods
- Question 21:**
- A. which necessitates frequent replacements and maintenance
 - B. which increases the overall weight and complexity of the aircraft
 - C. which reduces fuel consumption and emissions
 - D. which requires specialized training for assembly and installation
- Question 22:**
- A. With the rising costs and complexity of 3D printing, its adoption rate may slow down in the future
 - B. As the technology continues to advance and become more affordable, we can expect to see even wider adoption of 3D printing in the coming years
 - C. Although 3D printing offers unique advantages, traditional manufacturing remains the dominant force
 - D. Despite the technological advancements, 3D printing faces significant limitations in its applications

Part 5. Read the following passage about the importance of global mental health awareness and choose the best answer to each of the following questions from 23 to 30.

Mental health awareness is [crucial] in today's world, transcending geographical borders and cultural differences. The World Health Organization (WHO) estimates that nearly two-thirds of people with a known mental disorder never seek help from a health professional at all, highlighting a significant treatment gap. This gap is often wider in low- and middle-income countries, where services are often scarce and stigma surrounding mental health issues remains strong. For instance, in some communities, mental illness is incorrectly attributed to supernatural causes, leading to social isolation and inadequate treatment.

This global challenge requires a multifaceted approach. Education plays a vital role in dispelling myths and promoting open conversations about mental health. [It] empowers individuals to recognize warning signs, seek timely intervention, and offer support to those around them. In recent years, campaigns like World Mental Health Day have gained significant traction, encouraging communities to prioritize mental well-being alongside physical health.

[Furthermore, access to mental health services needs to be significantly expanded globally]. This involves training more mental health professionals, integrating mental health care into primary health care systems, and reducing the financial barriers to treatment. Telemedicine, for example, has emerged as a promising tool to bridge the gap, especially in remote areas.

Promoting mental health awareness and improving access to care are [essential] steps towards creating a more inclusive and supportive world. By working together, we can break down stigma, empower individuals, and ensure that everyone has the opportunity to live mentally healthy and fulfilling lives.

Question 23: Which of the following is NOT mentioned as a method for improving access to mental health care?

- | | | | |
|--|---|---|---|
| A. Utilizing telemedicine, particularly in remote areas | B. Subsidizing prescription medication costs | C. Training more mental health professionals | D. Integrating mental health care into primary health care systems |
|--|---|---|---|

Question 24: The word "crucial" in paragraph 1 is OPPOSITE in meaning to _____.

- | | | | |
|--------------------|-----------------------|---------------------|--------------------|
| A. relevant | B. unimportant | C. important | D. critical |
|--------------------|-----------------------|---------------------|--------------------|

Question 25: The word "It" in paragraph 2 refers to _____.

- | | | | |
|-------------------------------|-----------------------------|----------------------------|---------------------|
| A. Timely intervention | B. Open conversation | C. Global challenge | D. Education |
|-------------------------------|-----------------------------|----------------------------|---------------------|

Question 26: Which of the following best paraphrases the [first sentence] in paragraph 3?

- A.** It is not necessary to expand mental health services globally.
- B.** Mental health services are already sufficiently accessible worldwide.
- C.** Global access to mental health services requires considerable expansion.
- D.** Access to mental health services is a minor global concern.

Question 27: The word "essential" in paragraph 4 could be best replaced by _____.

- | | | | |
|--------------------|---------------------|---------------------|-------------------|
| A. optional | B. secondary | C. necessary | D. trivial |
|--------------------|---------------------|---------------------|-------------------|

Question 28: Which of the following is TRUE according to the passage?

- A.** Telemedicine is considered an ineffective tool for mental health care.
- B.** The WHO estimates a significant number of people with mental disorders do not seek professional help.
- C.** Most people with mental disorders readily seek help from health professionals.
- D.** Mental health stigma is less prevalent in low- and middle-income countries.

Question 29: In which paragraph of the passage does the writer use a present participle to describe an ongoing action related to bridging the gap in mental health care access?

- | | | | |
|-----------------------|-----------------------|-----------------------|-----------------------|
| A. Paragraph 1 | B. Paragraph 2 | C. Paragraph 3 | D. Paragraph 4 |
|-----------------------|-----------------------|-----------------------|-----------------------|

Question 30: In which paragraph of the passage does the writer present a cause-and-effect relationship related to the misattribution of mental illness?

- | | | | |
|-----------------------|-----------------------|-----------------------|-----------------------|
| A. Paragraph 1 | B. Paragraph 2 | C. Paragraph 3 | D. Paragraph 4 |
|-----------------------|-----------------------|-----------------------|-----------------------|

Part 6. Read the following passage about genetic ancestry testing and choose the best answer to each of the following questions from 31 to 40.

Genetic ancestry testing has become increasingly popular, allowing individuals to |delve into| their family histories and ethnic origins. [I] These tests analyze DNA samples to identify genetic markers associated with different geographic regions and populations. [II] This information can help individuals connect with their heritage, trace their lineage back through generations, and even discover previously unknown relatives. [III] This has in turn fostered a greater understanding of human migration patterns and population genetics. [IV]

The information provided by these tests, however, requires careful interpretation. [It] can be complex and sometimes even contradictory, as human populations have migrated and intermixed extensively throughout history. While the tests can offer valuable insights into an individual's ancestral origins, they don't necessarily paint a complete picture. For instance, a person might discover a strong genetic link to a particular region, but this doesn't necessarily mean their ancestors lived exclusively in that location. It simply indicates a significant genetic contribution from that population at some point in their family history. Furthermore, the accuracy of these tests relies heavily on the size and diversity of the reference databases used for comparison.

The expanding use of genetic ancestry testing also raises several important ethical and social considerations. One |long-term| effect could be the reinforcement of existing social biases and prejudices based on perceived ancestry. While race is a social construct, not a biological reality, individuals might misinterpret genetic ancestry information as validation of racial categories. This could exacerbate existing inequalities and discrimination. Additionally, concerns about privacy and data security are paramount. Genetic information is highly personal, and its misuse could have serious consequences. Questions about who owns and controls this data, and how it might be used in the future, remain important topics of discussion.

[Despite the limitations and ethical concerns, genetic ancestry testing remains a powerful tool for exploring human history and individual heritage]. As technology continues to advance and databases expand, the accuracy and scope of these tests are likely to improve. However, it is crucial that individuals approach these tests with a critical and informed perspective, understanding both their potential benefits and their limitations. Continued dialogue about the ethical implications of genetic ancestry testing is essential to ensure responsible and equitable use of this technology.

- Question 31:** Where in paragraph 1 does the following sentence best fit?
The rise of accessible and affordable testing kits has fueled a surge in public interest, with millions of people now possessing detailed genetic ancestry reports.
- A. [I] B. [II] C. [III] D. [IV]
- Question 32:** The phrase "delve into" in paragraph 1 could be best replaced by _____.
A. assess B. explore C. survey D. review
- Question 33:** The word "It" in paragraph 2 refers to _____.
A. a complete picture B. careful analysis C. the interpretation D. the information
- Question 34:** According to paragraph 2, which of the following is NOT a reason why genetic ancestry tests don't always provide a complete picture?
A. Incomplete ancestral location data.
B. Inaccurate reference databases.
C. Population mixing throughout history.
D. Limited access to ancestral birth records.
- Question 35:** Which of the following best summarises paragraph 3?
A. Ancestry tests raise ethical questions about data ownership and potential misuse, furthering racial stereotypes and impacting personal privacy.
B. Widespread genetic testing may increase societal prejudice by correlating race with genetics, leading to discrimination and biased information control.

- C. Ethical concerns regarding genetic ancestry tests include the potential for reinforcing social biases due to misinterpretation of ancestry information, and anxieties about data privacy and security.
D. Social biases could be amplified by ancestry test results, raising concerns about data privacy and the potential for discrimination based on genetic heritage.

Question 36: The word "long-term" in paragraph 3 is OPPOSITE in meaning to _____.

- A. immediate B. instant C. current D. present

Question 37: Which of the following is TRUE according to the passage?

- A. Genetic ancestry tests can reveal previously unknown family connections.
B. Genetic ancestry tests always accurately pinpoint specific ancestral locations.
C. Genetic ancestry tests provide definitive proof of racial categorization.
D. Genetic ancestry tests eliminate the need for traditional genealogical research.

Question 38: Which of the following best paraphrases the [first sentence] in paragraph 4?

- A. Though limitations and ethical issues exist, such tests offer insight into human history and heritage.
B. While acknowledging the drawbacks and ethical questions, ancestry testing effectively explores human history and personal lineage.
C. Even with concerns, genetic ancestry tests can help people investigate their background and history.
D. Despite some problems, genetic testing is helpful for learning about family history and human origins.

Question 39: Which of the following can be inferred from the passage?

- A. Individuals' genetic predispositions to certain diseases can be readily determined through ancestry testing.
B. Genetic ancestry testing will eventually replace traditional genealogical research methods.
C. Public discourse on the ethical implications of ancestry testing is unnecessary due to technological advancements.
D. Advancements in technology and larger databases will likely lead to more precise and comprehensive ancestry information.

Question 40: Which of the following best summarises the passage?

- A. Genetic ancestry testing offers insights into personal heritage and human history, but requires careful interpretation due to inherent limitations and ethical concerns regarding potential bias reinforcement and data privacy.
B. Genetic ancestry testing allows exploration of family history and human migration, but ethical issues surrounding social biases and data security, along with result limitations, demand careful consideration.
C. Increasingly popular, genetic ancestry tests reveal an individual's origins and family history, yet complexities like population mixing and data inaccuracies necessitate cautious interpretation and ethical considerations.
D. While providing valuable information on heritage and migration patterns, genetic ancestry tests possess limitations in accuracy and raise ethical concerns related to prejudice and privacy, demanding a critical approach.

----- THE END -----

ĐÁP ÁN

Câu	1	2	3	4	5	6	7	8	9	10
Chọn	D	D	C	D	B	B	C	A	B	D
Câu	11	12	13	14	15	16	17	18	19	20
Chọn	D	C	C	D	C	C	D	A	C	C
Câu	21	22	23	24	25	26	27	28	29	30
Chọn	C	B	B	B	D	C	C	B	C	A
Câu	31	32	33	34	35	36	37	38	39	40
Chọn	C	B	D	D	C	A	A	B	D	A

Is there something you've always dreamed of doing? 🤔

With PassionProjects, you can turn those "what ifs" into "why nots!"

Don't let your passions stay dormant any longer. Visit [PassionProjects](#) today and start (6) the life you've always wanted!



- Part 2. Read the following leaflet and choose the option that best fits each of the numbered blanks from 7 to 12.**

Unlock Your Potential: Online Learning Tools and Resources

Want to learn something new or enhance your existing skills? The digital world offers a wealth of opportunities for learning, right at your fingertips! Explore countless subjects, from coding to cooking, with online learning tools and resources.

Whether you're a student, professional, or lifelong learner, there are (7) _____ of platforms and resources available to suit your needs. Interactive learning experiences, personalized feedback, and flexible scheduling make online learning an attractive alternative to traditional classrooms.

Enhance your (8) _____ and boost your career prospects. Many platforms offer certifications upon completion of (9) _____ courses, adding value to your resume.

Overcome geographical barriers and learn from experts around the globe. (10) _____ your location, online learning provides access to high-quality education.

Don't (11) _____ on this incredible opportunity to expand your horizons. Choose a platform or resource that (12) _____ with your learning style and goals. Start your online learning journey today!

- Question 7:** **A.** a lot **B.** much **C.** many **D.** a number
- Question 8:** **A.** behaviors **B.** thoughts **C.** beliefs **D.** knowledge

- Question 9:** A. every B. each C. certain D. much
- Question 10:** A. Owing to B. Regardless of C. In spite of D. Because of
- Question 11:** A. break down B. fall through C. carry on D. miss out
- Question 12:** A. concurs B. clashes C. aligns D. merges

Part 3. Choose the option that indicate the best arrangement of utterances or sentences to make a meaningful exchange or text in each of the following questions from 13 to 17.

- Question 13:** a. John: Morning, Sarah! They're doing alright, a bit restless though. Lambing season's just around the corner, you know.
b. Sarah: Morning, John! How are the sheep doing with this early spring weather?
c. Sarah: That's right! Busy time ahead for you then. Best of luck with it!
- A. c - a - b B. b - a - c C. c - b - a D. b - c - a
- Question 14:** a. Maria: Absolutely! Have you seen the GreenPix Zero Energy Media Wall in Beijing?
b. David: No, tell me about it!
c. Maria: It's this massive LED screen powered entirely by solar panels integrated into the building's facade.
d. David: That's incredible! I need to look that up.
e. David: I'm fascinated by sustainable architecture. Building with nature in mind just makes sense.
- A. e - a - c - b - d B. e - a - b - c - d C. c - e - d - b - a D. e - b - d - c - a
- Question 15:** Hey everyone,
a. Let me know what dates work for you guys.
b. Maybe sometime next month, on a Friday night?
c. Remember how we always talked about having a reunion at Central Perk?
d. Well, I was thinking we could actually do it!
e. Can't wait to catch up!
Love,
Rachel
- A. c - b - d - e - a B. b - c - e - a - d C. e - b - d - a - c D. c - d - b - a - e
- Question 16:** a. The cello's ability to move seamlessly between sorrow and joy, power and vulnerability, makes it a truly captivating instrument.
b. Its voice, both human and ethereal, leaves an unforgettable mark on my musical landscape.
c. The haunting melody of the cello always stirs something deep within me.
d. Its rich, resonant tones seem to express a depth of emotion that words cannot convey.
e. From the mournful strains of Bach's cello suites to the passionate melodies of Shostakovich's concertos, this instrument captivates my soul.
- A. c - a - b - d - e B. e - b - d - c - a C. c - d - e - a - b D. e - a - b - c - d
- Question 17:** a. These collaborative environments foster a sense of community and provide invaluable resources like high-speed internet, meeting rooms, and networking opportunities.
b. This trend indicates a shift towards more flexible and collaborative work styles, driven by the desire for autonomy and a sense of shared purpose.
c. Its central location, coupled with its vibrant and supportive atmosphere, has contributed to its popularity, making it a sought-after workspace for budding entrepreneurs.
d. The Hive, specifically, has become a hub for tech startups and freelancers, attracting individuals from diverse backgrounds and skillsets.
e. The rise of co-working spaces like "The Hive" in downtown Austin reflects a growing trend of entrepreneurship and remote work.
- A. e - a - d - c - b B. b - c - a - d - e C. b - a - d - e - c D. b - e - a - d - c

Part 4. Read the following passage about Antarctica and choose the option that best fits each of the numbered blanks from 18 to 22.

Antarctica, Earth's southernmost continent, stands as a testament to the awe-inspiring power of nature. (18) _____, it remains largely untouched by human development. With an average temperature of -57 degrees Celsius (-70 degrees Fahrenheit) in its interior, Antarctica earns its title as the coldest place on Earth. This frozen desert, (19) _____, plays a crucial role in regulating global climate patterns.

Despite its harsh conditions, Antarctica teems with surprisingly diverse life. Penguins, seals, whales, and various seabirds thrive along its coastal regions, sustained by the nutrient-rich Southern Ocean. These creatures have developed remarkable adaptations to survive the extreme cold, such as the Emperor penguin's huddle formation, (20) _____, allowing them to incubate their eggs throughout the unforgiving winters.

(21) _____. Scientists from around the world converge upon this icy continent to study climate change, astronomy, geology, and a myriad of other disciplines. The continent's pristine environment and unique geographical features offer unparalleled opportunities for research, yielding valuable insights into our planet's history and future.

(22) _____. Its vast, icy landscapes inspire awe and wonder, while its vulnerability to climate change underscores the urgent need for global environmental stewardship. As we continue to learn from this frozen continent, we must strive to protect its delicate ecosystem for generations to come.

- Question 18:**
- A. Warmed by tropical breezes and bathed in constant sunlight
 - B. Buffeted by icy winds and shrouded in perpetual snow
 - C. Located near the equator and covered in dense forests
 - D. Characterized by mild weather and frequent rainfall
- Question 19:**
- A. which distributes approximately 70% of the world's freshwater reserves through river systems
 - B. which holds approximately 70% of the world's freshwater reserves locked within its ice sheets
 - C. which contributes significantly to the world's saltwater reserves through ocean currents
 - D. which consumes the majority of the world's freshwater reserves through evaporation
- Question 20:**
- A. a loosely arranged gathering that facilitates mating and courtship displays
 - B. a competitive hierarchy based on size and strength for individual survival
 - C. a tightly packed group that provides warmth and protection from the elements
 - D. a migratory pattern following food sources and avoiding predators
- Question 21:**
- A. Despite its ecological significance, Antarctica has limited resources for scientific advancements
 - B. In contrast to its ecological importance, Antarctica remains largely unexplored for scientific purposes
 - C. Beyond its ecological significance, Antarctica serves as a vital scientific research hub
 - D. Because of its ecological significance, Antarctica faces restrictions on scientific research activities
- Question 22:**
- A. Antarctica represents the abundance and limitlessness of natural resources
 - B. Antarctica showcases the dominance and control of humanity over natural forces
 - C. Antarctica provides evidence of the resilience and adaptability of human civilization
 - D. Antarctica stands as a stark reminder of both the beauty and fragility of our planet

Part 5. Read the following passage about the Urban Heat Island effect and choose the best answer to each of the following questions from 23 to 30.

Urban areas, with their concrete jungles and sprawling infrastructure, experience a phenomenon known as the Urban Heat Island (UHI) effect. This [intensified] heat is a direct result of human activities and urban development patterns. As cities replace natural landscapes with buildings, roads, and other infrastructure, they inadvertently create environments that absorb and retain more heat than surrounding rural areas.

The temperature difference between urban and rural areas can be significant, often ranging from 2 to 10 degrees Fahrenheit. This discrepancy is most pronounced during nighttime hours when urban areas cool down at a much slower rate. [This] occurs because the dense concentration of surfaces like asphalt and concrete absorbs solar radiation throughout the day and releases it slowly at night, keeping cities warmer.

[The consequences of UHIs extend beyond mere discomfort]. Elevated temperatures can exacerbate existing health issues, particularly for vulnerable populations like the elderly and those with respiratory problems. Additionally, increased heat puts a strain on energy resources as people rely more heavily on air conditioning, leading to higher energy consumption and greenhouse gas emissions, further contributing to climate change.

However, cities are not powerless against the UHI effect. Recognizing the environmental and societal impacts, many urban planners and policymakers are actively seeking [sustainable] solutions. These include implementing cool pavement technologies that reflect more sunlight, increasing green spaces to provide shade and promote evapotranspiration, and designing buildings with green roofs to reduce heat absorption. Through these efforts, cities can mitigate the impacts of UHIs and create healthier, more livable environments for their residents.

Question 23: Which of the following is NOT mentioned as a contributing factor to the Urban Heat Island effect?

- | | | | |
|--|---|---|---|
| A. Replacement of natural landscapes with man-made structures | B. Building density and sprawling infrastructure | C. Absorption of solar radiation by concrete and asphalt | D. Increased levels of carbon monoxide |
|--|---|---|---|

Question 24: The word "intensified" in paragraph 1 is OPPOSITE in meaning to _____.

- | | | | |
|------------------------|-------------------|---------------------|------------------------|
| A. strengthened | B. reduced | C. increased | D. concentrated |
|------------------------|-------------------|---------------------|------------------------|

Question 25: The word "This" in paragraph 2 refers to _____.

- | | | | |
|----------------------------------|---------------------------|---------------------------|-------------------------------|
| A. temperature difference | B. nighttime hours | C. solar radiation | D. slower cooling rate |
|----------------------------------|---------------------------|---------------------------|-------------------------------|

Question 26: Which of the following best paraphrases the [first sentence] in paragraph 3?

- A.** The only consequence of UHIs is a slight increase in temperature.
- B.** The negative effects of Urban Heat Islands are not limited to just feeling hot.
- C.** Feeling uncomfortable is the most significant consequence of the UHI effect.
- D.** UHIs cause discomfort, but there are no other significant consequences.

Question 27: The word "sustainable" in paragraph 4 could be best replaced by _____.

- | | | | |
|---------------------|---------------------|-----------------------|------------------------------------|
| A. temporary | B. expensive | C. complicated | D. environmentally friendly |
|---------------------|---------------------|-----------------------|------------------------------------|

Question 28: Which of the following is TRUE according to the passage?

- A.** UHIs can worsen existing health problems, especially for vulnerable groups.
- B.** Rural areas retain more heat than urban areas during the day.
- C.** Cities have no way to combat the negative impacts of the UHI effect.
- D.** The UHI effect is solely caused by increased greenhouse gas emissions.

Question 29: In which paragraph of the passage does the writer mention a present causal relationship between the UHI effect and increased energy consumption?

- | | | | |
|-----------------------|-----------------------|-----------------------|-----------------------|
| A. Paragraph 1 | B. Paragraph 2 | C. Paragraph 3 | D. Paragraph 4 |
|-----------------------|-----------------------|-----------------------|-----------------------|

Question 30: In which paragraph of the passage does the writer primarily focus on solutions to mitigate the UHI effect?

- | | | | |
|-----------------------|-----------------------|-----------------------|-----------------------|
| A. Paragraph 1 | B. Paragraph 2 | C. Paragraph 3 | D. Paragraph 4 |
|-----------------------|-----------------------|-----------------------|-----------------------|

Part 6. Read the following passage about biodiversity hotspots and the importance of their conservation and choose the best answer to each of the following questions from 31 to 40.

[I] Biodiversity hotspots are regions of the Earth that are exceptionally rich in species but face extraordinary threats. [II] The immense concentration of unique life within these relatively small areas underscores their importance for global

biodiversity conservation. [III] Scientists have pinpointed 36 such hotspots around the world, ranging from the Tropical Andes to the Mediterranean Basin, and efforts to protect them have |branched out| to involve local communities, governments, and international organizations. [IV]

The identification of these hotspots allows conservationists to prioritize their efforts. Protecting these areas offers the greatest “return on investment” in terms of preserving the maximum number of species with the least amount of land. |This| strategic approach is crucial because conservation resources are limited, and focusing on biodiversity hotspots can prevent the extinction of a vast number of species simultaneously. By targeting these key regions, organizations can maximize their impact on global biodiversity preservation.

The threats facing biodiversity hotspots are numerous and often intertwined. Habitat destruction, primarily driven by deforestation for agriculture and urban development, is a |wide-ranging| problem. Climate change is also exacerbating the situation, altering temperature and rainfall patterns, putting further stress on already vulnerable ecosystems. Invasive species, introduced by human activities, often outcompete native flora and fauna, disrupting delicate ecological balances. Illegal wildlife trade, driven by demand for exotic pets and traditional medicine, further decimates populations of endangered species within these hotspots.

|The significance of biodiversity hotspots extends beyond simply preserving unique species|. These regions provide vital ecosystem services, such as clean water, carbon sequestration, and pollination, that benefit human populations globally. The loss of biodiversity within these areas can have cascading effects, impacting food security, climate stability, and even human health. Protecting biodiversity hotspots is not just about saving species; it is about safeguarding the future of our planet.

Question 31: Where in paragraph 1 does the following sentence best fit?
These areas represent just 2.

- A. [I] B. [II] C. [III] D. [IV]

Question 32: The phrase "branched out" in paragraph 1 could be best replaced by _____.

- A. expanded B. broken out C. reached out D. spread out

Question 33: The word "This" in paragraph 2 refers to _____.

- A. protecting areas with maximum species B. prioritizing conservation efforts based on hotspots C. preventing the extinction of many species D. maximizing impact on biodiversity

Question 34: According to paragraph 2, which of the following is NOT a reason for prioritizing biodiversity hotspots?

- A. Preventing widespread extinctions
B. Maximizing preservation efforts
C. Limited conservation resources
D. Increased accessibility for researchers

Question 35: Which of the following best summarises paragraph 3?

- A. Numerous threats, including habitat destruction, climate change stresses, invasive species, and illegal wildlife trade, endanger biodiversity hotspots.
B. Biodiversity hotspots face numerous threats, including habitat loss due to deforestation and development, climate change impacts, invasive species, and illegal wildlife trade.
C. Human activities like deforestation, urban growth, and exotic pet trade threaten biodiversity, impacting vulnerable ecosystems.
D. Deforestation, climate change, and invasive species are major threats to biodiversity hotspots, leading to species decline.

Question 36: The word "wide-ranging" in paragraph 3 is OPPOSITE in meaning to _____.

- A. limited B. narrow C. localized D. contained

Question 37: Which of the following is TRUE according to the passage?

- A. Habitat destruction is the sole threat to hotspots' biodiversity.
- B. Protecting biodiversity hotspots contributes to global human well-being.
- C. Thirty-six hotspots are solely located in tropical regions.
- D. Conservation efforts focus solely on preserving unique species.

Question 38: Which of the following best paraphrases the [first sentence] in paragraph 4?

- A. Hotspots' importance encompasses broader ecological contributions beyond species.
- B. Preserving species is just one aspect of the significance of biodiversity hotspots.
- C. The value of biodiversity hotspots lies in more than just saving individual species.
- D. Biodiversity hotspots are important not only for species preservation but also for overall ecological health.

Question 39: Which of the following can be inferred from the passage?

- A. Invasive species are the primary driver of biodiversity loss in all hotspots.
- B. Loss of biodiversity in hotspots can negatively affect global food supplies and climate stability.
- C. Governments are solely responsible for protecting biodiversity hotspots.
- D. All biodiversity hotspots experience the same level of threat from human activities.

Question 40: Which of the following best summarises the passage?

- A. Biodiversity hotspots are species-rich areas facing severe threats, requiring prioritized conservation efforts due to limited resources. Their protection is crucial not only for preserving biodiversity but also for maintaining vital ecosystem services that support human well-being.
- B. Defined by high species concentration and significant threats, biodiversity hotspots require strategic conservation to maximize limited resources and combat habitat loss, climate change, invasive species, and illegal wildlife trade.
- C. Due to numerous threats, biodiversity hotspots require global conservation efforts to protect their unique species and the vital ecosystem services they provide. Prioritizing these areas ensures efficient use of limited resources for maximum impact.
- D. Containing a large number of unique species, biodiversity hotspots are threatened by human activities and environmental changes. Protecting these regions is essential for preserving species and the ecosystem services they provide for human benefit.

----- THE END -----

ĐÁP ÁN

Câu	1	2	3	4	5	6	7	8	9	10
Chọn	A	A	A	D	A	B	D	D	C	B
Câu	11	12	13	14	15	16	17	18	19	20
Chọn	D	C	B	B	D	C	A	B	B	C
Câu	21	22	23	24	25	26	27	28	29	30
Chọn	C	D	D	B	D	B	D	A	C	D
Câu	31	32	33	34	35	36	37	38	39	40
Chọn	B	A	B	D	B	C	B	D	B	A

Part 1. Read the following advertisement and choose the option that best fits each of the numbered blanks from 1 to 6.

😞 Tired of Outfit Disasters? 😞

Do you ever find yourself staring (1) _____ your closet, completely (2) _____ about what to wear? We've all been there! But with OutfitInspiration, those days are gone!

OutfitInspiration is a revolutionary new app (3) _____ you create stunning outfits for any occasion. Simply tell us about the event you're (4) _____, your personal style, and any specific (5) _____ you want to incorporate.

OutfitInspiration's advanced algorithm will then generate personalized outfit suggestions, complete with (6) _____ and shopping links. So why struggle with outfit anxiety? Download OutfitInspiration today and unlock your most stylish self!



- | | | | | |
|--------------------|------------------|-------------------|-------------------|----------------------|
| Question 1: | A. on | B. over | C. into | D. at |
| Question 2: | A. cluelessly | B. clueless | C. cluelessness | D. clue |
| Question 3: | A. that helps | B. helped | C. to help | D. helps that |
| Question 4: | A. attend | B. attending | C. attended | D. to attend |
| Question 5: | A. item clothing | B. items clothing | C. clothing items | D. clothing of items |
| Question 6: | A. style tricks | B. style tips | C. style advice | D. style hacks |

Part 2. Read the following leaflet and choose the option that best fits each of the numbered blanks from 7 to 12.

Unleash Your Inner Artist: Writing a Song or Poem

Have you ever dreamt of crafting the perfect (7) _____ or penning a heartfelt poem? Now's your chance! Whether you're a seasoned writer or just starting out, exploring the world of creative writing can be an incredibly rewarding experience.

Where do you begin? First, find your inspiration. It could be (8) _____ a personal experience to a breathtaking sunset. Let your imagination run wild! Next, choose your form. Will it be a sonnet, a haiku, a free verse poem, or maybe a catchy pop song? There are (9) _____ different structures to explore.

Once you've got an idea, (10) _____ any words or phrases that come to mind. Don't worry about making it perfect at this stage, just let the creativity flow. Then, start shaping your piece. Think about the (11) _____ you want to convey and the emotions you want to evoke.

Remember, there are no wrong answers in creative writing. Every piece is a unique expression of (12) _____ inner voice. So, grab a pen and paper, or open your laptop, and start creating!

- | | | | | |
|--------------------|------------------|-------------------|---------------|---------------|
| Question 7: | A. lyric | B. melody | C. music | D. rhythm |
| Question 8: | A. anything from | B. different from | C. related to | D. similar to |
| Question 9: | A. a few | B. little | C. many | D. much |

- Question 10:** A. take after B. look after C. jot down D. put away
- Question 11:** A. message B. tune C. format D. style
- Question 12:** A. our B. your C. his/her D. their

Part 3. Choose the option that indicate the best arrangement of utterances or sentences to make a meaningful exchange or text in each of the following questions from 13 to 17.

- Question 13:** a. Lisa: Really? I've always thought about it, but I wasn't sure what to write.
b. Sarah: Honestly, just your thoughts and feelings! It helps clear my head before the day begins.
c. Sarah: I started journaling every morning, and it's been surprisingly helpful!
- A. b - a - c B. c - b - a C. b - c - a D. c - a - b
- Question 14:** a. David: Maybe try focusing on a powerful image or metaphor that represents that?
b. David: Hmm, well what's the song about?
c. Emily: Ooh, like a phoenix rising! Thanks, that gives me something to work with!
d. Emily: It's about overcoming a challenge and finding your inner strength.
e. Emily: I'm trying to write a song, but I'm stuck on the chorus. Any tips?
- A. d - a - b - e - c B. b - a - e - c - d C. e - b - d - a - c D. b - a - d - e - c
- Question 15:** Hey Lisa,
a. Can't wait!
b. Are you still up for seeing The Killers this Saturday?
c. I'm so excited, I've heard their live show is unforgettable.
d. Let me know if you need a ride or want to grab food beforehand.
e. I managed to snag some great seats close to the stage!
Best,
Jessica
- A. b - d - e - c - a B. e - d - b - a - c C. b - a - e - d - c D. b - e - c - d - a
- Question 16:** a. It's about stepping outside your comfort zone, embracing the unknown, and discovering hidden depths within yourself.
b. Ultimately, adventure travel is a transformative journey that leaves you forever changed, with a newfound appreciation for the world and your place within it.
c. From scaling towering peaks to navigating bustling souks, every experience offers a unique thrill and a chance for personal growth.
d. The allure of adventure travel lies in its ability to push boundaries and ignite the soul.
e. The memories forged and lessons learned on the open road become invaluable souvenirs, shaping perspectives and broadening horizons.
- A. b - a - c - e - d B. e - d - c - b - a C. c - d - b - e - a D. d - c - a - e - b
- Question 17:** a. Walking amongst these ancient giants is a truly humbling experience, reminding us of the power and resilience of the natural world.
b. These majestic giants, known as Coast Redwoods (*Sequoia sempervirens*), can reach heights of over 350 feet.
c. The Redwood forests are a testament to the longevity of these trees, with some individuals living for over 2,000 years.
d. Their massive trunks, sometimes exceeding 30 feet in diameter, create a sense of awe and wonder for visitors.
e. The Redwood National and State Parks in California are home to some of the tallest trees on Earth.
- A. b - a - d - c - e B. e - b - a - c - d C. e - b - d - c - a D. c - b - e - d - a

Part 4. Read the following passage about ... the characteristics, social structures, threats, and conservation efforts related to elephants and choose the option that best fits each of the numbered blanks from 18 to 22.

Elephants, the largest land mammals on Earth, are often referred to as “gentle giants” due to their generally calm and social nature. (18) _____, (19) _____. Despite their massive size, they are known for their intelligence, emotional depth, and strong family bonds.

Matriarchal societies are the cornerstone of elephant herds, with the eldest and most experienced female leading the group. This wise matriarch, (20) _____, guides her family through their territory, protecting the young and making crucial decisions for the herd's survival. Elephants communicate through a variety of vocalizations, including trumpets, rumbles, and roars, and they also use touch, scent, and body language to convey messages.

Sadly, these magnificent creatures face numerous threats. (21) _____, leading to increased competition for resources and human-wildlife conflict. Poaching for ivory remains a serious problem, driving a lucrative illegal trade that decimates elephant populations. Conservation efforts are crucial to protecting these gentle giants and ensuring their survival for future generations.

By supporting ethical tourism initiatives, advocating for stricter anti-poaching measures, and raising awareness about the plight of elephants, we can all play a part in preserving these intelligent and emotionally complex animals. The survival of elephants, (22) _____, is not only essential for maintaining biodiversity but also a testament to our own commitment to protecting the planet's incredible wildlife.

- Question 18:**
- A. They weigh up to ten feet and their height can reach over six tons
 - B. Weighing up to six tons and reaching heights of over ten feet
 - C. With a weight of ten feet and a height of up to six tons
 - D. Reaching heights of over six tons and weighing up to ten feet
- Question 19:**
- A. Asian elephants are smaller than their African relatives in the bush
 - B. African bush elephants are larger than their Asian counterparts
 - C. Asian counterparts are larger than African elephants in the bush
 - D. African bush elephants are smaller than their counterparts in Asia
- Question 20:**
- A. who possesses food and water sources of a wealthy knowledge
 - B. about whom possesses knowledge of a wealthy food and water source
 - C. whose knowledge about water and food sources is wealthy
 - D. who possesses a wealth of knowledge about food and water sources
- Question 21:**
- A. Habitat loss due to human encroachment and agriculture forces elephants into smaller areas
 - B. Elephants are forced by humans into smaller areas due to agriculture and habitat encroachment
 - C. Smaller areas are forcing elephants into agriculture and human encroachment due to habitat loss
 - D. Habitat loss due to elephants encroaching on and forcing humans into agriculture in smaller areas
- Question 22:**
- A. their species in an ecosystem keystone
 - B. their ecosystems in a keystone species
 - C. a keystone species in their ecosystems
 - D. a species in their keystone ecosystems

Part 5. Read the following passage about the sociology of education and choose the best answer to each of the following questions from 23 to 30.

The sociology of education examines the [complex] interplay between education and society. It explores how social structures, cultural norms, and individual experiences shape educational opportunities and outcomes. Rather than simply viewing education as a personal journey, this field of study analyzes how broader societal forces influence who succeeds and why. It delves into issues of inequality, access, and the hidden curriculum that operates within and beyond the classroom.

For instance, sociologists have long studied the "achievement gap," which refers to the persistent disparities in academic performance among different social groups. [They] have found that factors such as socioeconomic status, race, ethnicity, and gender can significantly impact a student's educational trajectory. Students from disadvantaged backgrounds often face more obstacles, such as limited access to quality schools, underrepresentation in advanced courses, and implicit biases within the education system.

[Moreover, the sociology of education investigates how schools themselves can perpetuate or challenge social inequalities]. The curriculum taught, the teaching methods employed, and even the social interactions within a school environment can all contribute to reinforcing existing power dynamics. By understanding these complex interactions, sociologists aim to identify strategies for creating a more equitable and just education system.

This field of study emphasizes the need for [inclusive] policies and practices that address the social, economic, and cultural factors that can hinder or facilitate students' academic success. By shedding light on these issues, the sociology of education provides valuable insights for policymakers, educators, and communities striving to create educational environments where all students have the opportunity to thrive.

Question 23: Which of the following is NOT mentioned as a factor impacting a student's educational trajectory?

- A. Race B. Gender C. Socioeconomic status D. Religious affiliation

Question 24: The word "complex" in paragraph 1 is OPPOSITE in meaning to _____.

- A. multifaceted B. difficult C. simple D. intricate

Question 25: The word "They" in paragraph 2 refers to _____.

- A. school systems B. hidden factors C. sociologists D. social groups

Question 26: Which of the following best paraphrases the [first sentence] in paragraph 3?

- A. The sociology of education disregards the role of schools in influencing social inequalities.
B. Social inequalities are solely challenged by the field of educational sociology.
C. The study of educational sociology explores how schools can either maintain or break down social inequalities.
D. Schools alone are responsible for perpetuating social inequalities in the education system.

Question 27: The word "inclusive" in paragraph 4 could be best replaced by _____.

- A. limited B. encompassing C. restrictive D. exclusive

Question 28: Which of the following is TRUE according to the passage?

- A. The passage primarily focuses on the individual's role in achieving academic success.
B. The achievement gap is solely based on differences in individual student ability.
C. Sociologists believe that schools always reduce social inequalities.
D. The sociology of education considers how social factors influence educational success.

Question 29: In which paragraph of the passage does the writer mention a present causal relationship between socioeconomic status and a student's educational trajectory?

- A. Paragraph 1 B. Paragraph 2 C. Paragraph 3 D. Paragraph 4

Question 30: In which paragraph of the passage does the writer emphasize the importance of the sociology of education in informing policy and practice for educational equity?

- A. Paragraph 1 B. Paragraph 2 C. Paragraph 3 D. Paragraph 4

Part 6. Read the following passage about the history of voting rights and choose the best answer to each of the following questions from 31 to 40.

The history of voting rights is a long and arduous journey, marked by struggles for inclusion and equality. [I] For centuries, suffrage, the right to vote, was often [tied up with] factors like land ownership, wealth, and gender. [II] Similarly, during the medieval period in Europe, voting rights were often limited to members of the nobility and the clergy. [III] These early restrictions reflect a hierarchical social structure where power was concentrated in the hands of a privileged few. [IV]

The rise of democratic ideals during the Enlightenment and the American and French Revolutions challenged these traditional power structures. These movements championed principles of natural rights and popular sovereignty, arguing that governments derive their legitimacy from the consent of the governed. [This] philosophical shift gradually led to expansions of suffrage, though the path was far from smooth. In the newly formed United States, while the Declaration of Independence proclaimed that all men are created equal, voting rights initially remained limited to white male property owners.

Throughout the 19th and 20th centuries, various social and political movements fought to dismantle discriminatory voting practices. The abolitionist movement, which sought to end slavery, also advocated for the voting rights of African Americans. The women's suffrage movement fought tirelessly for women's right to vote, ultimately achieving victory with the passage of the Nineteenth Amendment to the U.S. Constitution in 1920. The Civil Rights Movement of the mid-20th century addressed the [deep-seated] racial discrimination that prevented African Americans from exercising their voting rights, leading to landmark legislation like the Voting Rights Act of 1965.

[These struggles demonstrate the ongoing evolution of voting rights as societies grapple with issues of inclusion and equality]. Even today, debates continue about voter access, registration procedures, and the influence of money in politics. The history of voting rights reminds us that the fight for universal suffrage is a continuous process, requiring constant vigilance and advocacy to ensure that all voices are heard and respected in a democratic society.

Question 31: Where in paragraph 1 does the following sentence best fit?

In ancient Greece, the birthplace of democracy, only free male citizens could participate in political decision-making, excluding women, slaves, and foreigners.

- A. [I] B. [II] C. [III] D. [IV]

Question 32: The phrase "tied up with" in paragraph 1 could be best replaced by _____.

- A. bound to B. connected to C. joined with D. linked with

Question 33: The word "This" in paragraph 2 refers to _____.

- A. popular sovereignty B. natural rights idea C. the shift in philosophy D. democratic ideals rise

Question 34: According to paragraph 2, which of the following initially had voting rights in the newly formed United States?

- A. all property owners
B. all adult men
C. white male citizens
D. white male property owners

Question 35: Which of the following best summarises paragraph 3?

- A. The fight for expanded suffrage continued with movements advocating for voting access for various marginalized populations.
B. The 19th and 20th centuries saw movements fighting for voting rights for African Americans and women, culminating in legislative victories like the Voting Rights Act.
C. Numerous social groups achieved voting rights during the 20th century after prolonged struggles for equality and inclusion.
D. Abolitionists and suffragists secured voting rights for all citizens, leading to the decline of discriminatory practices.

Question 36: The word "deep-seated" in paragraph 3 is OPPOSITE in meaning to _____.

- A. fleeting B. superficial C. shallow D. surface

Question 37: Which of the following is TRUE according to the passage?

- A. Voting rights have finally achieved universal suffrage across the globe.

- B. The fight for universal suffrage is an ongoing process requiring continuous effort.
- C. Modern democracies have resolved all issues related to voting access.
- D. Wealth and land ownership are still major factors for voting rights.

Question 38: Which of the following best paraphrases the [first sentence] in paragraph 4?

- A. Ongoing conflicts reveal the evolving nature of suffrage within societies striving for fairness and acceptance.
- B. These battles highlight the constant progress of voting rights as societies tackle equality and inclusion.
- C. Current disagreements show that the advancement of voting rights continues to change as societies deal with equality.
- D. The continuing fight demonstrates how voting rights have steadily improved as societies work toward equal participation.

Question 39: Which of the following can be inferred from the passage?

- A. Universal suffrage is a fully realized concept, with all nations guaranteeing equal voting access to all citizens.
- B. Achieving truly universal suffrage requires continuous advocacy and vigilance against discriminatory practices.
- C. The passage primarily focuses on the historical progress of voting rights without addressing contemporary challenges.
- D. The expansion of suffrage has always been a smooth and steady progression without encountering resistance.

Question 40: Which of the following best summarises the passage?

- A. Historically linked to privilege, suffrage has gradually expanded due to various movements championing equality, but contemporary issues highlight the ongoing need for vigilance in protecting and expanding voting access.
- B. From ancient restrictions to modern debates, the fight for voting rights has been a long journey, with social movements achieving significant victories but still facing obstacles in ensuring equal access for all.
- C. The history of voting rights is a continuous struggle for inclusion, evolving from exclusionary practices based on wealth and social status to modern debates on access and equality, demonstrating that universal suffrage requires constant vigilance.
- D. Initially restricted by social hierarchy, voting rights expanded through democratic movements, yet challenges regarding access and equality persist, showing the need for ongoing advocacy for universal suffrage.

----- THE END -----

ĐÁP ÁN

Câu	1	2	3	4	5	6	7	8	9	10
Chọn	C	B	A	B	C	B	A	A	A	C
Câu	11	12	13	14	15	16	17	18	19	20
Chọn	A	B	D	C	D	D	C	B	B	D
Câu	21	22	23	24	25	26	27	28	29	30
Chọn	A	C	D	C	C	C	B	D	B	D
Câu	31	32	33	34	35	36	37	38	39	40
Chọn	B	B	C	D	B	B	B	B	B	C

Part 1. Read the following advertisement and choose the option that best fits each of the numbered blanks from 1 to 6.

 Is Your Data a Mess? Get Organized with DataVault! 

Tired of (1) _____ data silos? DataVault provides a (2) _____ solution to streamline your information management.

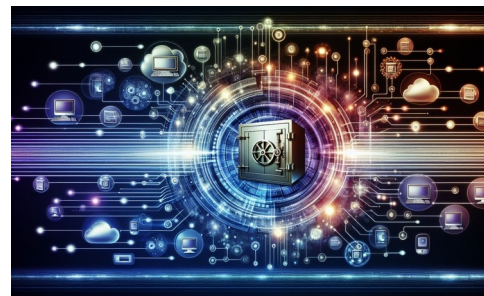
With DataVault, you can:

- * Easily (3) _____ data from multiple sources.
- * Access your information (4) _____ various platforms.
- * Improve decision-making by (5) _____ real-time insights.

DataVault is designed for businesses (6) _____ optimize their data strategy.

Stop wasting time and resources on inefficient data management.

Contact us today to learn more about DataVault!



- | | | | | |
|--------------------|-------------------------------|-------------------------------|-------------------------------|-------------------------------|
| Question 1: | A. unmanaged | B. unmanageably | C. unmanageable | D. unmanaging |
| Question 2: | A. secure and scalable | B. scalable and secure | C. and secure scalable | D. secure scalable and |
| Question 3: | A. gather | B. bring | C. mix | D. integrate |
| Question 4: | A. through | B. inside | C. across | D. over |
| Question 5: | A. to analyze | B. analyzed | C. analyzing | D. analyze |
| Question 6: | A. looked to | B. looking to | C. look | D. that look to |

Part 2. Read the following leaflet and choose the option that best fits each of the numbered blanks from 7 to 12.

Feeling Overwhelmed? Learn Stress Reduction Techniques!

Is stress controlling your life? Don't let it! Learn practical techniques to manage stress and regain control. This workshop offers simple yet effective strategies to (7) _____ daily pressures.

Stress manifests in many ways, from headaches and (8) _____ to difficulty sleeping and irritability. Untreated stress can impact both your physical and mental well-being. (9) _____ simple changes can make a big difference.

Learn to incorporate these powerful techniques into your daily routine:

- * Deep breathing exercises: Discover how (10) _____ minutes of focused breathing can calm your mind and body.
- * Mindfulness practices: Reconnect with the present moment to reduce (11) _____ and improve focus.
- * Progressive muscle relaxation: Release tension held in your muscles (12) _____ and relaxing different muscle groups.

Don't let stress hold you back. Invest in yourself and learn practical stress reduction techniques. Register today!

- | | | | | |
|---------------------|-----------------------|---------------------|----------------------|----------------------|
| Question 7: | A. come across | B. cope with | C. break into | D. look after |
| Question 8: | A. preferences | B. finances | C. fatigue | D. beverages |
| Question 9: | A. A few | B. Much | C. Many | D. Several |
| Question 10: | A. either | B. another | C. several | D. each |

Question 11: A. confidence B. anxiety C. enthusiasm D. motivation

Question 12: A. from tensing B. with tensing C. by tensing D. on tensing

Part 3. Choose the option that indicate the best arrangement of utterances or sentences to make a meaningful exchange or text in each of the following questions from 13 to 17.

Question 13: a. Lisa: Thanks! I did. I've been getting into jewelry making lately, it's so much fun!
b. Sarah: Seriously? That's amazing! I'd love to see more of your work sometime.
c. Sarah: Wow, Lisa, those earrings are gorgeous! Did you make them yourself?

A. c - b - a B. b - a - c C. c - a - b D. b - c - a

Question 14: a. Emily: Wow, seriously? I've heard it's terrifying!
b. Emily: I don't know if I could handle that. I get nervous just watching people rock climb at the gym.
c. Ben: You should still check it out, the cinematography is incredible even if you close your eyes during the scary parts!
d. Ben: Absolutely! My palms were sweating just watching it.
e. Ben: I watched "Free Solo" last night, the one about Alex Honnold climbing El Capitan without ropes.

A. b - d - c - e - a B. e - a - b - d - c C. e - c - b - d - a D. e - a - d - b - c

Question 15: Hey Jake,
a. Are you free for coffee sometime next week?
b. Let me know what your schedule looks like.
c. It feels like forever since we last hung out, probably back in our college days at NYU!
d. We should definitely catch up properly soon.
e. It was great bumping into you at the Central Park book fair yesterday.
Best,
Maria

A. e - c - d - a - b B. e - c - a - d - b C. b - d - e - a - c D. b - a - c - e - d

Question 16: a. However, the feeling of accomplishment when I can finally hold a conversation in my target language is incredibly rewarding.
b. Learning a new language has always been a dream of mine, and I recently decided to pursue it seriously.
c. The challenge of understanding a different grammar structure and vocabulary is both exhilarating and frustrating at times.
d. This journey of learning is a constant reminder that growth comes from stepping outside of our comfort zones.
e. It's not just about the language itself, but also about opening myself up to a new culture and way of thinking.

A. d - e - c - b - a B. b - c - a - e - d C. e - b - d - a - c D. c - a - d - b - e

Question 17: a. Cambridge Analytica's scandal in 2018, involving the harvesting of millions of Facebook users' data, highlighted the potential for misuse.
b. The rise of social media has led to an unprecedented amount of personal data being shared online.
c. Governments and organizations are now implementing stricter regulations to protect user data and hold companies accountable.
d. This incident served as a wake-up call for individuals to be more vigilant about their online presence and data privacy settings.
e. While platforms like Facebook and Instagram offer convenience and connection, they also raise concerns about data privacy.

A. b - e - a - d - c B. e - d - c - b - a C. e - c - b - d - a D. d - e - a - b - c

Part 4. Read the following passage about the human brain and choose the option that best fits each of the numbered blanks from 18 to 22.

(18) _____. It serves as the control center for our thoughts, emotions, movements, and bodily functions. (19) _____, the brain operates like a vast, intricate network constantly sending and receiving electrochemical signals. This network allows for remarkable feats, from recognizing faces and processing language to orchestrating complex movements like playing a musical instrument.

Understanding the brain's structure is key to unraveling its mysteries. It can be broadly divided into three main parts: the cerebrum, the cerebellum, and the brainstem. The cerebrum, the largest part, is responsible for higher-level cognitive functions, including language, memory, and reasoning. (20) _____, the cerebellum coordinates movement and balance. Meanwhile, the brainstem connects the brain to the spinal cord, relaying crucial information and controlling essential bodily functions such as breathing and heart rate.

The brain's intricate workings are further illustrated by its division into specialized areas. For instance, (21) _____, plays a crucial role in our personalities and executive functions. The parietal lobe processes sensory information like touch and temperature, while the occipital lobe handles visual information. The temporal lobe, meanwhile, plays a key role in auditory processing, memory, and language comprehension.

(22) _____. Its remarkable complexity allows us to learn, adapt, and experience the world around us in profound ways. While our understanding of this intricate organ continues to evolve, one thing remains clear: the brain's remarkable capabilities continue to fascinate and inspire scientists and laymen alike.

Question 18: A. The human skeleton, comprised of numerous bones, provides structure and support to the body
 B. The human eye, with its intricate lens and retina, captures images and transmits them to the brain
 C. The human heart, beating constantly throughout life, is considered the most vital organ in the human body
 D. The human brain, weighing in at approximately three pounds, is often dubbed the most complex structure known to humankind

Question 19: A. Composed of billions of interconnected neurons
 B. Protecting our nervous system with crucial cells
 C. Functioning with electrical pulses that control our muscles
 D. Relying primarily on glucose for its energy source

Question 20: A. Found beneath the brainstem, connecting to the spine
 B. Situated at the front of the brain near the forehead
 C. Positioned deep within the brain's central core
 D. Located at the back of the brain below the cerebrum

Question 21: A. the hypothalamus, playing a key role in regulating hormones
 B. the hippocampus, being essential for forming and retrieving memories
 C. the frontal lobe, which is responsible for planning and decision-making
 D. the spinal cord, enabling swift reflexes and sensory responses

Question 22: A. In essence, the human brain is a marvel of biological engineering
 B. Ultimately, studying the brain helps understand human consciousness
 C. In conclusion, medical advancements continue to enhance brain health
 D. Consequently, brain damage can result in cognitive impairment

Part 5. Read the following passage about the history and development of maritime technology and choose the best answer to each of the following questions from 23 to 30.

Maritime history is [vast], encompassing millennia of human interaction with the sea. From the rudimentary reed boats of ancient Egypt to the mighty warships of the Roman Empire, civilizations have utilized waterways for exploration, trade, and warfare. The invention of the compass and astrolabe, along with advancements in shipbuilding, facilitated longer voyages and fueled the Age of Exploration. This era witnessed European powers traversing the globe, establishing new trade routes, and forever altering the course of history.

The Industrial Revolution brought forth a new era in shipping, characterized by the transition from sail to steam power. The first commercially successful steamboat, Robert Fulton's Clermont, revolutionized water travel in 1807. [This] innovation paved the way for larger, faster vessels capable of transporting greater quantities of cargo and passengers. The development of the screw propeller and the compound steam engine further enhanced the efficiency and reliability of these ships.

[The 20th century witnessed another major shift in maritime technology with the advent of containerization]. This system, involving the use of standardized shipping containers, revolutionized cargo handling, significantly reducing loading and unloading times. The introduction of specialized cargo ships, such as oil tankers and bulk carriers, further streamlined maritime transportation. Today, massive container ships, some capable of carrying over 20,000 twenty-foot equivalent units (TEUs), traverse the globe, facilitating international trade on an unprecedented scale.

Modern shipping is a [complex] and interconnected system vital to the global economy. It faces numerous challenges, including concerns about environmental sustainability, piracy, and geopolitical tensions. Nonetheless, advancements in technology, such as autonomous ships and digitalization, hold the potential to further transform the industry, making it more efficient, sustainable, and resilient in the years to come.

Question 23: Which of the following is NOT mentioned as a challenge to modern shipping?

- A. Geopolitical tensions B. Labor strikes C. Environmental sustainability D. Piracy

Question 24: The word "vast" in paragraph 1 is OPPOSITE in meaning to _____.

- A. ancient B. modern C. shallow D. limited

Question 25: The word "This" in paragraph 2 refers to _____.

- A. steamboat innovation B. Industrial Revolution C. steam engine power D. waterway travel

Question 26: Which of the following best paraphrases the [first sentence] in paragraph 3?

- A. Containerization hindered the progress of maritime technology in the 20th century.
B. Containerization emerged in the 20th century and revolutionized maritime technology.
C. The 20th century saw advancements in maritime technology unrelated to containerization.
D. Maritime technology in the 20th century was solely reliant on containerization.

Question 27: The word "complex" in paragraph 4 could be best replaced by _____.

- A. simple B. intricate C. outdated D. independent

Question 28: Which of the following is TRUE according to the passage?

- A. The compass and astrolabe hindered the Age of Exploration.
B. The development of the screw propeller increased ship efficiency.
C. Robert Fulton invented the steam engine in 1807.
D. Container ships are now powered primarily by wind sails.

Question 29: In which paragraph of the passage does the writer mention the use of standardized shipping containers?

- A. Paragraph 1 B. Paragraph 2 C. Paragraph 3 D. Paragraph 4

Question 30: In which paragraph of the passage does the writer discuss the impact of the Industrial Revolution on maritime transport?

- A. Paragraph 1 B. Paragraph 2 C. Paragraph 3 D. Paragraph 4

Part 6. Read the following passage about the evolution of human language and choose the best answer to each of the following questions from 31 to 40.

[I] The evolution of language, a defining characteristic of humanity, is shrouded in mystery, with its origins stretching back tens of thousands of years. [II] The increasing complexity of social interactions within early human groups likely |gave rise to| the need for more sophisticated communication, pushing the development of language forward. [III] This co-evolution of brain and social structure played a vital role in shaping the communicative abilities that set us apart from other species. [IV]

These early forms of language were likely rudimentary, consisting of gestures, vocalizations, and simple words representing concrete objects or actions. [This] proto-language gradually evolved, incorporating more abstract concepts and grammatical structures. Evidence for this progression can be seen in the development of tools and symbolic art, which suggest an increasing capacity for abstract thought and representation, crucial for complex language. The development of agriculture and settled communities further accelerated the evolution of language, as the need for cooperation and information sharing became even more critical.

One key aspect of language evolution is the emergence of |language-specific| brain regions. As language became more complex, specific areas of the brain, like Broca's area, specialized in processing grammatical structures and producing speech. This specialization allowed for more efficient and nuanced communication. Simultaneously, the vocal tract also underwent evolutionary changes, enabling the production of a wider range of sounds and contributing to the diversity of languages we see today. The interplay between brain development, vocal adaptation, and social pressures shaped the trajectory of language evolution.

|Despite the challenges in reconstructing the precise path of language evolution, studying existing languages, their relationships, and the fossil record provides valuable insights|. By comparing different languages and their structures, linguists can trace back common ancestries and reconstruct proto-languages, offering glimpses into the past. Further research into the genetic and neurological underpinnings of language promises to further illuminate this fascinating aspect of human evolution.

Question 31: Where in paragraph 1 does the following sentence best fit?
While pinpointing the exact moment language emerged is impossible, researchers agree that its development is intricately tied to the evolution of our brains, particularly areas like Broca's and Wernicke's areas, which are crucial for speech production and comprehension.

- A. [I] B. [II] C. [III] D. [IV]

Question 32: The phrase "gave rise to" in paragraph 1 could be best replaced by _____.

- A. resulted in B. spawned C. initiated D. brought about

Question 33: The word "This" in paragraph 2 refers to _____.

- A. symbolic communication B. rudimentary early language C. complex interaction D. abstract representation

Question 34: According to paragraph 2, which of the following contributed to the acceleration of language evolution?

- A. symbolic artwork
B. advanced tools
C. settled agriculture
D. complex gestures

Question 35: Which of the following best summarises paragraph 3?

- A. Social pressures solely dictated the evolution of brain and vocal structures.
B. Vocal tract changes primarily drove language development and diversification.

- C. Specialized brain regions alone facilitated complex language and wider sounds.
- D. Brain areas and vocal tracts adapted, enabling complex communication and language diversity.

Question 36: The word "language-specific" in paragraph 3 is OPPOSITE in meaning to _____.

- A. general
- B. localized
- C. specialized
- D. designated

Question 37: Which of the following is TRUE according to the passage?

- A. Social interaction complexity spurred early language development.
- B. Brain regions adapted after vocal tract changes.
- C. Language evolution's exact path is definitively known.
- D. Proto-language instantly evolved into complex forms.

Question 38: Which of the following best paraphrases the [first sentence] in paragraph 4?

- A. Although tracing language evolution's exact trajectory is challenging, investigating languages and fossils provides valuable knowledge.
- B. While the precise course of language evolution is hard to rebuild, language study and fossil analysis give useful information.
- C. Though reconstructing language evolution's exact route is difficult, analyzing current languages, their connections, and fossil records offers helpful clues.
- D. Despite the difficulty in precisely retracing language development, exploring modern languages and fossils yields useful data.

Question 39: Which of the following can be inferred from the passage?

- A. Language evolution is solely dependent on brain development.
- B. Modern languages lack connections to earlier language forms.
- C. The fossil record provides complete details of early languages.
- D. Studying genetics and neurology can shed more light on language evolution.

Question 40: Which of the following best summarises the passage?

- A. Social pressures led to the development of specific brain regions and vocal adaptations, enabling complex communication, while modern linguistic analysis fully explains language origins.
- B. Human language emerged from simple forms, influenced by social complexity and biological changes, but the specific trajectory remains unclear, limiting the usefulness of current research.
- C. Human language evolved from basic gestures and sounds to complex structures, driven by social needs, brain and vocal tract adaptations, and reflected in modern language analysis and ongoing research.
- D. Rudimentary proto-language developed into sophisticated communication due to agricultural advancements, with the evolution fully explained by studying brain regions and vocal tracts.

----- THE END -----

ĐÁP ÁN

Câu	1	2	3	4	5	6	7	8	9	10
Chọn	C	A	D	C	C	B	B	C	A	C
Câu	11	12	13	14	15	16	17	18	19	20
Chọn	B	C	C	D	A	B	A	D	A	D
Câu	21	22	23	24	25	26	27	28	29	30
Chọn	C	A	B	D	A	B	B	B	C	B
Câu	31	32	33	34	35	36	37	38	39	40
Chọn	B	D	B	C	D	A	A	C	D	C

Part 1. Read the following advertisement and choose the option that best fits each of the numbered blanks from 1 to 6.

Tired of feeling lost in the digital world? 🌐

NetworkNow is here to help you (1) _____ navigate the online landscape. Are you unsure (2) _____ which social media platform is right for you? Do you struggle (3) _____ engaging content that attracts followers? NetworkNow offers personalized coaching sessions with experienced digital strategists (4) _____ the ever-changing world of social media. We'll help you (5) _____ a strong online presence and connect with your target audience. Don't wait any longer to unlock the power of your (6) _____! Contact NetworkNow today!



- Question 1:** A. confidently B. confident C. confidence D. confide
Question 2: A. to B. about C. from D. on
Question 3: A. creating B. to creating C. to create D. create
Question 4: A. understood B. who understand C. which understanding D. to understand
Question 5: A. get B. find C. make D. build
Question 6: A. personal brand online B. personal online brand C. online brand personal D. brand online personal

Part 2. Read the following leaflet and choose the option that best fits each of the numbered blanks from 7 to 12.

Unleash Your Inner Power: Building Self-Discipline

Do you struggle to stick to your goals? Do you often (7) _____ important tasks? Building self-discipline is the key to achieving your dreams and living a more fulfilling life. This isn't about restrictive rules; it's about cultivating (8) _____ that empower you.

Here's how to get started:

* Start Small: Don't try to overhaul your entire life at once. Begin with (9) _____ small, manageable goal, like drinking more water or reading for 15 minutes each day. As you experience success, your confidence will grow.

* Create a Routine: Establishing a daily routine provides structure and reduces the need for constant decision-making, freeing up (10) _____ mental energy.

* Find Your Motivation: What truly drives you? Connect your goals to your deepest values and (11) _____. This will fuel your commitment when things get tough.

* Reward Yourself: Acknowledge and celebrate (12) _____ tracking your progress. Rewards, no matter how small, reinforce positive behavior and keep you motivated.

Start building your self-discipline today and unlock your full potential!

- Question 7:** A. put down B. put on C. put up D. put off
Question 8: A. habits B. wishes C. ideas D. dreams
Question 9: A. much B. any C. some D. one

- Question 10:** A. many B. several C. much D. a lot of
- Question 11:** A. aspirations B. fears C. doubts D. anxieties
- Question 12:** A. in case of B. apart from C. prior to D. along with

Part 3. Choose the option that indicate the best arrangement of utterances or sentences to make a meaningful exchange or text in each of the following questions from 13 to 17.

- Question 13:** a. John: Thanks! It's all about using fresh tomatoes and simmering them slowly with a touch of basil.
b. Sarah: No wonder it tastes so good! Fresh ingredients make all the difference.
c. Sarah: This pasta sauce is amazing! What's your secret, John?
A. b - a - c B. c - a - b C. b - c - a D. c - b - a
- Question 14:** a. David: I'm not sure, but maybe we could do some research later!
b. David: Me neither, but it's a fascinating thought, isn't it?
c. David: Did you know that some people believe dreams can predict the future?
d. Maria: Really? I've heard that before, but I'm not sure if I believe it.
e. Maria: Definitely. I wonder if there's any scientific evidence to support it.
A. c - d - e - b - a B. b - d - a - c - e C. d - a - b - c - e D. c - d - b - e - a
- Question 15:** Hi Anna,
a. I've been looking for a unique statement piece for my sister's birthday, and your designs are perfect.
b. Do you have a website or online shop where I can see more of your work?
c. Please let me know!
d. The earrings you made with the lapis lazuli stones are absolutely stunning.
e. I just wanted to say how much I love your handmade jewelry!
Best,
Jessica
A. e - d - a - b - c B. d - e - c - b - a C. e - d - c - b - a D. d - b - c - a - e
- Question 16:** a. Putting together outfits is like creating a work of art, playing with colors, textures, and silhouettes to achieve a desired aesthetic.
b. For me, fashion is a form of self-expression and creativity, a way to communicate my mood and personality without words.
c. I find inspiration everywhere, from vintage Vogue magazines to the latest runway shows by designers like Alexander McQueen and Dior.
d. Ultimately, fashion allows me to embrace my individuality and feel confident in my own skin.
e. While trends come and go, true style is timeless and reflects individual taste rather than blindly following the crowd.
A. c - d - a - e - b B. c - a - b - d - e C. b - c - a - e - d D. c - d - e - a - b
- Question 17:** a. Social media platforms constantly bombard us with curated versions of people's seemingly perfect lives.
b. Ultimately, FOMO highlights the importance of cultivating self-awareness and appreciating our own unique journeys.
c. This constant exposure can lead to feelings of inadequacy, anxiety, and a desire to be constantly connected.
d. The fear of missing out, or FOMO, has become increasingly prevalent in today's society.
e. As a result, individuals may prioritize experiences solely for their shareability rather than genuine enjoyment.
A. d - a - c - e - b B. e - d - b - a - c C. c - b - e - d - a D. c - a - e - b - d

Part 4. Read the following passage about Tet Nguyen Dan, the Vietnamese New Year, and choose the option that best fits each of the numbered blanks from 18 to 22.

(18) _____. Falling on the same day as Chinese New Year, Tet marks the arrival of spring based on the lunisolar calendar and typically occurs in late January or early February. (19) _____, Tet is observed for at least three days, with many Vietnamese people taking the entire week off to partake in festivities.

Preparations for Tet often begin weeks in advance. Homes are meticulously cleaned and decorated with colorful flowers, particularly peach blossoms in the south and kumquat trees in the north. Special foods, (20) _____, are meticulously prepared, including banh chung (sticky rice cake), gio cha (pork sausage), and mut (candied fruits). On New Year's Eve, families gather for a lavish feast and the ancestral altar is adorned with offerings of food, incense, and flowers.

One of the most significant aspects of Tet is the giving of lucky money, known as li xi. Traditionally, married couples give crisp, new bills in red envelopes to children and unmarried adults as a symbol of good fortune. Visiting relatives and friends during the first three days of Tet is another important tradition. (21) _____, people exchange well wishes and partake in festive meals together.

(22) _____. From the colorful decorations and delicious food to the meaningful traditions and heartfelt reunions, Tet Nguyen Dan offers a fascinating glimpse into the heart of Vietnamese culture and its values of family, hope, and renewal.

- Question 18:**
- A. Tet Nguyen Dan, more commonly known as Tet, is the most important and celebrated festival in Vietnamese culture
 - B. While less commonly known as Tet Nguyen Dan, Tet is also a very important festival in Vietnamese culture
 - C. Vietnamese culture is celebrated most importantly during Tet Nguyen Dan, despite it being less commonly known as Tet
 - D. Tet, less commonly known as Tet Nguyen Dan, is one of the most important and celebrated festivals in Vietnamese culture

- Question 19:**
- A. It is a time considered for family reunions and the beginning of a new year's work
 - B. Considered a time for family reunions and new beginnings
 - C. Considering the time spent with family during reunions and the beginning of the new year
 - D. Considering the best time for family reunions to begin the new year

- Question 20:**
- A. so people believe that eating them will bring luck and fortune in the next year
 - B. believing that preparing them brings good luck and fortune to the new year
 - C. and people believe these foods create good luck and fortune throughout the year
 - D. which are believed to bring good luck and fortune for the new year

- Question 21:**
- A. They dress in the finest of clothes
 - B. With their finest clothing ironed and cleaned
 - C. Wearing their finest clothing accessories
 - D. Dressed in their finest clothes

- Question 22:**
- A. The vibrant and joyous occasion of Tet was showcased by Vietnam's rich cultural heritage
 - B. Vietnam's rich cultural heritage is showcased during the vibrant and joyous occasion of Tet
 - C. Vietnam showcases its rich cultural heritage with its vibrant and joyous Tet occasion
 - D. Tet is a vibrant and joyous occasion that showcases the rich cultural heritage of Vietnam

Part 5. Read the following passage about innovations in healthcare and choose the best answer to each of the following questions from 23 to 30.

The rate of innovation in healthcare today is nothing short of [remarkable]. From artificial intelligence to gene editing, the medical field is witnessing breakthroughs that were once considered the stuff of science fiction. These advancements are not just changing the face of healthcare; they are revolutionizing how we understand, diagnose, treat, and even prevent diseases.

One area where innovation is making a significant impact is telemedicine. [This] refers to the use of technology to deliver healthcare services remotely, connecting patients and providers regardless of location. This is particularly beneficial for individuals in rural or underserved areas who may have limited access to specialized care. Telemedicine platforms often incorporate features like video conferencing, remote patient monitoring, and electronic health records, making healthcare more accessible and convenient.

[Another groundbreaking innovation is the development of personalized medicine]. This approach utilizes an individual's genetic information to tailor medical treatments, making them more effective and minimizing side effects. By analyzing a patient's unique genetic makeup, doctors can identify their susceptibility to certain diseases and personalize preventive measures. This shift towards personalized medicine holds immense potential for treating complex conditions like cancer and Alzheimer's disease with greater precision.

Perhaps the most [exciting] aspect of these innovations is their potential to improve health outcomes for people worldwide. As technology continues to advance and become more affordable, we can expect to see wider access to quality healthcare, leading to longer and healthier lives. The future of healthcare is brimming with possibilities, and it is an exciting time to witness the transformative power of innovation in action.

Question 23: Which of the following is NOT mentioned as a benefit of innovations in healthcare?

- | | | | |
|---|--|---------------------------------------|--|
| A. Reduced cost of medical equipment | B. More precise treatment of diseases | C. Improved disease prevention | D. Increased access to healthcare |
|---|--|---------------------------------------|--|

Question 24: The word "remarkable" in paragraph 1 is OPPOSITE in meaning to _____.

- | | | | |
|---------------------------------|------------------|-----------------|----------------------|
| A. unremarkable/ordinary | B. modern | C. rapid | D. innovative |
|---------------------------------|------------------|-----------------|----------------------|

Question 25: The word "This" in paragraph 2 refers to _____.

- | | | | |
|------------------------|------------------------------|----------------------------|--------------------------|
| A. telemedicine | B. significant impact | C. specialized care | D. technology use |
|------------------------|------------------------------|----------------------------|--------------------------|

Question 26: Which of the following best paraphrases the [first sentence] in paragraph 3?

- A.** There are no other groundbreaking innovations besides personalized medicine.
- B.** Personalized medicine is the only groundbreaking innovation.
- C.** The creation of personalized medicine is another significant innovation.
- D.** The development of personalized medicine is a somewhat insignificant innovation.

Question 27: The word "exciting" in paragraph 4 could be best replaced by _____.

- | | | | |
|----------------------|---------------------|-------------------|-----------------------|
| A. concerning | B. promising | C. tedious | D. predictable |
|----------------------|---------------------|-------------------|-----------------------|

Question 28: Which of the following is TRUE according to the passage?

- A.** Gene editing is the primary focus of current healthcare innovations.
- B.** Personalized medicine mainly addresses infectious diseases.
- C.** Technological advancements guarantee immediate global health equality.
- D.** Telemedicine improves healthcare access for those in remote areas.

Question 29: In which paragraph of the passage does the writer use a colon to introduce a list of examples?

- | | | | |
|-----------------------|-----------------------|-----------------------|-----------------------|
| A. Paragraph 1 | B. Paragraph 2 | C. Paragraph 3 | D. Paragraph 4 |
|-----------------------|-----------------------|-----------------------|-----------------------|

Question 30: In which paragraph of the passage does the writer express the most optimistic outlook on the future of healthcare?

- | | | | |
|-----------------------|-----------------------|-----------------------|-----------------------|
| A. Paragraph 1 | B. Paragraph 2 | C. Paragraph 3 | D. Paragraph 4 |
|-----------------------|-----------------------|-----------------------|-----------------------|

Part 6. Read the following passage about climate solutions and their multifaceted approach and choose the best answer to each of the following questions from 31 to 40.

[I] The science behind climate solutions is complex but revolves around a core principle: reducing greenhouse gas emissions and enhancing carbon sinks. [II] Human activities, particularly the burning of fossil fuels for energy, have dramatically increased the concentration of these gases in the atmosphere. [III] This, in turn, traps more heat and [leads to] a warming planet. [IV]

These strategies encompass a range of approaches, from technological innovations to policy changes. Renewable energy sources, like solar and wind power, offer viable alternatives to fossil fuels. [They] generate electricity without emitting greenhouse gases, thus reducing our reliance on carbon-intensive energy sources. Furthermore, improving energy efficiency in buildings, transportation, and industries can significantly decrease overall energy consumption and, consequently, emissions.

Developing and implementing effective climate solutions also requires a [multi-faceted] approach involving governments, businesses, and individuals. Carbon capture and storage technologies, while still in their early stages of development, hold promise for trapping emissions from power plants and industrial facilities before they reach the atmosphere. Simultaneously, promoting sustainable land management practices, such as reforestation and afforestation, can enhance natural carbon sinks. Trees absorb carbon dioxide from the air during photosynthesis, effectively removing it from the atmosphere.

[In addition to these technological and natural solutions, policy interventions play a crucial role]. Carbon pricing mechanisms, for example, can incentivize businesses and consumers to reduce their carbon footprints by putting a price on emissions. Regulations and standards can mandate emissions reductions from specific sectors, further driving the transition to a cleaner, more sustainable future. International cooperation is also paramount, as climate change is a global challenge requiring collaborative efforts to mitigate its effects and adapt to its unavoidable consequences.

- Question 31:** Where in paragraph 1 does the following sentence best fit?
Consequently, scientists focus on strategies that either limit the amount of greenhouse gases entering the atmosphere or increase the planet's capacity to absorb existing gases.
- A. [I] B. [II] C. [III] D. [IV]
- Question 32:** The phrase "leads to" in paragraph 1 could be best replaced by _____.
A. causes B. invokes C. creates D. results in
- Question 33:** The word "They" in paragraph 2 refers to _____.
A. Technological innovations B. Fossil fuels C. Policy changes D. Renewable energy sources
- Question 34:** According to paragraph 2, which of the following is NOT a benefit of renewable energy?
A. Reduced greenhouse gas emissions
B. Electricity generation without emissions
C. Increased reliance on fossil fuels
D. Lower carbon-intensive energy use
- Question 35:** Which of the following best summarises paragraph 3?
A. Governments and businesses must prioritize funding for renewable energy sources and sustainable land use practices immediately.
B. Technological innovations and policy interventions are equally important in mitigating the effects of climate change and require global cooperation.
C. Reforestation and afforestation are critical for removing carbon dioxide from the atmosphere, thereby offsetting emissions from industrial facilities.
D. Effective climate action needs diverse approaches, including nascent carbon capture technology, and land management to boost natural carbon sinks like trees.
- Question 36:** The word "multi-faceted" in paragraph 3 is OPPOSITE in meaning to _____.
A. simplistic B. singular C. unvaried D. shallow
- Question 37:** Which of the following is TRUE according to the passage?
A. Only governments are responsible for implementing climate solutions effectively.
B. Fossil fuels are necessary for promoting sustainable land management practices.

- C. Carbon capture technology is a fully developed solution for climate change.
- D. Climate solutions involve technological advancements, policy changes, and natural processes.

Question 38: Which of the following best paraphrases the [first sentence] in paragraph 4?

- A. Policy interventions are implemented alongside other crucial solutions.
- B. Natural solutions and technology are less important than policy changes.
- C. Besides technological and nature-based methods, policy changes are essential.
- D. Governments must enact regulations supporting new technologies and nature.

Question 39: Which of the following can be inferred from the passage?

- A. A combined effort from various sectors is necessary to address climate change effectively.
- B. Technological solutions alone are sufficient to combat climate change.
- C. Individual actions have little impact on mitigating climate change.
- D. Carbon pricing is the single most effective way to reduce carbon footprints.

Question 40: Which of the following best summarises the passage?

- A. Climate change requires immediate action through renewable energy adoption, improved energy efficiency, and sustainable land management, supplemented by government regulations and international agreements to reduce emissions effectively.
- B. Combating climate change requires a multifaceted approach encompassing renewable energy, enhanced energy efficiency, carbon capture, sustainable land management, and crucial policy interventions like carbon pricing and international cooperation.
- C. While technological solutions like carbon capture offer promise, climate change mitigation primarily depends on policy changes incentivizing reduced emissions and promoting sustainable land use and reforestation efforts.
- D. The main drivers of climate change are human activities, especially fossil fuel combustion, necessitating a shift towards renewable energy sources, improved energy efficiency, and global cooperation on emission reduction policies.

----- THE END -----

ĐÁP ÁN

Câu	1	2	3	4	5	6	7	8	9	10
Chọn	A	B	C	B	D	A	D	A	D	D
Câu	11	12	13	14	15	16	17	18	19	20
Chọn	A	D	B	D	A	C	A	A	B	D
Câu	21	22	23	24	25	26	27	28	29	30
Chọn	D	D	A	A	A	C	B	D	A	D
Câu	31	32	33	34	35	36	37	38	39	40
Chọn	D	D	D	C	D	A	D	C	A	B

Part 1. Read the following advertisement and choose the option that best fits each of the numbered blanks from 1 to 6.

⚡ Unleash Your Potential with PowerUp! ⚡

Tired of feeling (1) _____ and unproductive? Wish you could power through your to-do list (2) _____ ease? Introducing PowerUp, the revolutionary new energy supplement designed to unlock your full potential!

PowerUp is formulated with a unique blend of natural ingredients (3) _____ to enhance focus, boost energy levels, and improve cognitive function. Say goodbye to afternoon slumps and hello to (4) _____ throughout the day.

Ready to experience the PowerUp difference? Visit our website (5) _____ about our product and read testimonials from satisfied customers. Don't wait another minute to unlock your true potential—start (6) _____ your performance today with PowerUp!



- | | | | | |
|--------------------|----------------------------------|----------------------------------|----------------------------------|----------------------------------|
| Question 1: | A. sluggishly | B. slugged | C. sluggish | D. sluggishness |
| Question 2: | A. through | B. by | C. from | D. with |
| Question 3: | A. proving | B. proven | C. to prove | D. that prove |
| Question 4: | A. increased productivity levels | B. levels increased productivity | C. productivity levels increased | D. levels productivity increased |
| Question 5: | A. for learn more | B. to learn more | C. learning more | D. to learn much |
| Question 6: | A. to optimize | B. optimize | C. optimizing | D. optimized |

Part 2. Read the following leaflet and choose the option that best fits each of the numbered blanks from 7 to 12.

Is Social Media a Muse or a Menace? The Impact on Art & Culture

Social Media has undeniably transformed how we experience art and culture. But is this influence a positive one? Join us for a fascinating exploration of this complex question.

Has social media democratized creativity, offering a platform for (7) _____ aspiring artist? Or has the relentless pursuit of likes and shares diminished artistic (8) _____?

This discussion will analyze several key issues. How does the (9) _____ volume of online content affect our attention spans and appreciation for traditional art forms? Does the viral nature of social media encourage homogenization of cultural (10) _____?

Furthermore, we'll (11) _____ the role of social media in shaping artistic trends and movements. Does it empower marginalized artists or simply amplify existing inequalities? Finally, we'll consider the implications of digital art ownership and the evolving relationship between artists and their audiences, particularly (12) _____ NFTs and the metaverse.

Join the conversation and share your perspective!

- | | | | | |
|--------------------|---------|----------|---------|---------|
| Question 7: | A. much | B. every | C. each | D. many |
|--------------------|---------|----------|---------|---------|

- Question 8:** A. integrity B. integrities C. integrability D. integritys
- Question 9:** A. little B. sheer C. several D. few
- Question 10:** A. expressiveness B. expressions C. expressive D. expressively
- Question 11:** A. delve on B. delve into C. delve at D. delve with
- Question 12:** A. in the case of B. in the event of C. in the face of D. in the context of

Part 3. Choose the option that indicate the best arrangement of utterances or sentences to make a meaningful exchange or text in each of the following questions from 13 to 17.

- Question 13:** a. Sarah: Oh, I love his work! I'll have to check it out before it closes.
 b. David: I did! The photography section was breathtaking, especially the Ansel Adams prints.
 c. Sarah: Hey David, did you manage to catch that new exhibit at the MOMA?
- A. c - a - b B. b - c - a C. c - b - a D. b - a - c
- Question 14:** a. Chris: Sure, what are you hoping to see there?
 b. Emily: I'm thinking of going to the Museum of Modern Art this weekend, want to join?
 c. Emily: Exactly! I think it will be a really impactful experience.
 d. Chris: Oh wow, her work documenting the Great Depression is so powerful.
 e. Emily: They have a Dorothea Lange photography exhibit I'm really interested in.
- A. b - e - d - c - a B. b - e - d - a - c C. c - e - b - d - a D. b - a - e - d - c
- Question 15:** Hi Daniel,
 a. I imagine transforming it into an immersive art installation with interactive elements and projections.
 b. Remember that abandoned theater we saw downtown?
 c. I had an exciting idea for our next creative project!
 d. We could involve local artists and create a truly unique experience.
 e. What do you think? Let's chat soon!
 Best,
 Olivia
- A. b - d - a - c - e B. c - d - a - e - b C. b - c - e - a - d D. c - b - a - d - e
- Question 16:** a. On one hand, advancements in artificial intelligence and automation promise to revolutionize various industries, from healthcare to transportation.
 b. The key lies in responsible development and thoughtful implementation, ensuring that technology serves us, not the other way around.
 c. Despite these challenges, I remain optimistic that we can harness technology for the betterment of humanity.
 d. The future of technology fills me with a sense of both excitement and apprehension.
 e. However, these advancements also raise concerns about job displacement and ethical considerations surrounding artificial intelligence.
- A. b - a - e - d - c B. e - b - a - d - c C. d - a - e - c - b D. b - e - d - a - c
- Question 17:** a. The once quiet beaches are now crowded, and traffic congestion during peak season has become a major concern for residents.
 b. While the influx of visitors has brought economic benefits, it has also put a strain on the town's infrastructure and resources.
 c. The small coastal town of Seahaven has seen a dramatic increase in tourism over the past five years.
 d. Additionally, the demand for accommodations has led to a surge in short-term rentals, driving up housing costs for locals.
 e. Balancing the advantages of a thriving tourism industry with the preservation of Seahaven's charm and the needs of its residents remains an ongoing challenge.
- A. b - e - d - c - a B. b - a - e - d - c C. c - b - a - d - e D. d - b - e - c - a

Part 4. Read the following passage about ... *The Wimbledon Championships* and choose the option that best fits each of the numbered blanks from 18 to 22.

(18) _____. Established in 1877, Wimbledon is the oldest tennis tournament globally, (19) _____. Held annually in late June and early July, the tournament draws thousands of spectators eager to witness legendary matches unfold on the meticulously maintained grass courts.

A key aspect of Wimbledon's allure is its unwavering commitment to tradition. Players, (20) _____, must adhere to a strict dress code that mandates predominantly white attire. This unique rule, along with the tournament's use of wooden rackets in its early years, distinguishes Wimbledon from all other Grand Slam events. These time-honored customs imbue the tournament with an aura of timeless elegance and respect for the sport's heritage.

Wimbledon's enduring legacy is further solidified by the impressive roster of champions who have graced its hallowed grounds. From tennis legends like Billie Jean King and Rod Laver to modern-day icons like Roger Federer and Serena Williams, (21) _____. These unforgettable moments have cemented Wimbledon's place in sporting history, inspiring generations of athletes and fans alike.

(22) _____. They are a celebration of tradition, sportsmanship, and the pursuit of excellence. The tournament's unique blend of history, elegance, and world-class competition continues to captivate audiences, ensuring that Wimbledon remains a beloved and revered institution in the world of sport.

- Question 18:**
- A. The Wimbledon Championships, a lesser-known tennis tournament, are a display of modern athleticism
 - B. Wimbledon, a relatively new tennis tournament, has quickly gained popularity for its exciting matches
 - C. The Wimbledon Championships, a world-renowned tennis tournament, stand as a beacon of tradition and athletic prowess
 - D. Though not the oldest, the Wimbledon Championships remain a significant tennis tournament globally
- Question 19:**
- A. steeped in a rich history that captivates fans worldwide
 - B. struggling to maintain its relevance in the fast-paced world of sports
 - C. broadcast only to a limited audience within the United Kingdom
 - D. occurring at a modern venue with little historical significance
- Question 20:**
- A. who often choose to disregard the strict dress code policies
 - B. who come from all corners of the globe to compete
 - C. who are often unfamiliar with the tournament's long-standing traditions
 - D. who primarily represent the host country and surrounding nations
- Question 21:**
- A. the tournament has been plagued by controversies and scandals throughout its history
 - B. the tournament has struggled to attract top-tier talent in recent years
 - C. the tournament's matches have often been criticized for their lack of excitement
 - D. the tournament has witnessed countless displays of exceptional skill and determination
- Question 22:**
- A. In conclusion, The Wimbledon Championships represent far more than just a tennis tournament
 - B. In conclusion, The Wimbledon Championships are primarily a showcase of modern tennis techniques
 - C. In conclusion, The Wimbledon Championships have limited appeal compared to other major sporting events
 - D. In conclusion, The Wimbledon Championships face an uncertain future due to declining viewership

Part 5. Read the following passage about the impacts of celebrity culture and choose the best answer to each of the following questions from 23 to 30.

Celebrity culture, in many ways, has become [inescapable]. From social media feeds to television screens and magazine covers, celebrities permeate nearly every aspect of modern life. This constant exposure influences our perceptions of success,

beauty, and even happiness. We are bombarded with images of their seemingly perfect lives, often leading to unrealistic comparisons and pressure to conform to societal ideals promoted through their platforms.

One of the most significant impacts of celebrity culture is its influence on consumerism. These public figures often become walking, talking advertisements, endorsing everything from clothing brands to luxury cars. [This] association leads to a powerful desire among fans to acquire the same products, believing it will bring them closer to the lifestyle they admire. This phenomenon fuels a cycle of relentless consumption, potentially leading individuals down a path of financial strain and dissatisfaction in pursuit of an often-unattainable image.

[However, it's not all negative]. Celebrity influence can also be a force for good. Many celebrities leverage their platform to raise awareness for important social and environmental issues. Whether it's advocating for LGBTQ+ rights, supporting disaster relief efforts, or promoting mental health awareness, their voices can reach millions and inspire action. This positive influence can translate into tangible change, from increased donations to shifts in public opinion on critical issues.

Despite the potential for positive impact, it's important to engage with celebrity culture in a [critical] manner. We must remember that the carefully curated images we see are often far from reality. Building media literacy skills and recognizing the constructed nature of celebrity personas can help us navigate this landscape more effectively. Ultimately, maintaining a healthy distance and focusing on our own values and aspirations is essential in mitigating the potentially negative effects of this pervasive cultural force.

Question 23: Which of the following is NOT mentioned as an area where celebrities use their influence for good?

- A. Animal rights B. Mental health awareness C. Disaster relief efforts D. LGBTQ+ rights

Question 24: The word "inescapable" in paragraph 1 is OPPOSITE in meaning to _____.

- A. unavoidable B. pervasive C. influential D. avoidable

Question 25: The word "This" in paragraph 2 refers to _____.

- A. relentless consumption B. celebrity endorsement C. public attention D. financial strain

Question 26: Which of the following best paraphrases the [first sentence] in paragraph 3?

- A. Celebrity influence is always detrimental.
B. Celebrity influence is entirely negative.
C. There are no positive aspects of celebrity influence.
D. Celebrity influence is not always a bad thing.

Question 27: The word "critical" in paragraph 4 could be best replaced by _____.

- A. analytical B. uncritical C. indifferent D. accepting

Question 28: Which of the following is TRUE according to the passage?

- A. Celebrities always present a realistic portrayal of their lives.
B. Social media has little impact on the pervasiveness of celebrity culture.
C. Consumerism is unaffected by celebrity endorsements.
D. Celebrities can influence public opinion on important issues.

Question 29: In which paragraph of the passage does the writer use a conditional sentence to discuss the potential downsides of consumerism driven by celebrities?

- A. Paragraph 1 B. Paragraph 2 C. Paragraph 3 D. Paragraph 4

Question 30: In which paragraph of the passage does the writer suggest strategies for mitigating the negative impacts of celebrity culture?

Part 6. Read the following passage about the benefits of art therapy and choose the best answer to each of the following questions from 31 to 40.

Art therapy, a distinct field within the broader scope of psychotherapy, harnesses the creative process to promote healing and well-being. [I] Individuals are encouraged to express themselves through various artistic mediums, such as painting, sculpting, drawing, or music, even if they don't consider themselves artistically inclined. [II] This process allows them to work through complex emotions, traumas, and experiences that may be difficult to articulate verbally. [III] Studies have shown its effectiveness in reducing anxiety and depression, improving self-esteem, and fostering a sense of control in individuals facing challenging life circumstances. For instance, a 2018 study published in the journal **The Arts in Psychotherapy** found that art therapy significantly reduced symptoms of PTSD in refugees. [IV]

This form of therapy is particularly beneficial for individuals who struggle with verbal communication. [It] provides a non-verbal outlet for expressing thoughts and feelings, bypassing the limitations of language. This can be especially helpful for children, trauma survivors, or individuals with certain cognitive or developmental disabilities. The act of creating art can be cathartic, allowing individuals to externalize their internal struggles and gain a new perspective on their experiences. By engaging with the creative process, they can begin to process and make sense of difficult emotions, ultimately leading to a greater sense of self-awareness and understanding.

Furthermore, art therapy can facilitate the development of essential life skills, such as problem-solving and improved communication. The process of creating art often involves overcoming obstacles, experimenting with different techniques, and making [decision-making] choices. These experiences can translate into improved problem-solving abilities in other areas of life. Additionally, the artwork created during therapy sessions can serve as a springboard for dialogue between the individual and the therapist. The art becomes a tangible representation of the individual's inner world, providing a concrete focus for discussion and exploration. This can lead to deeper insights and a stronger therapeutic relationship.

[In conclusion, art therapy offers a powerful and versatile approach to healing and personal growth]. By tapping into the inherent human capacity for creative expression, it provides a unique pathway for individuals to explore their emotions, process experiences, and develop valuable coping skills. The benefits extend across a wide range of populations, highlighting the significant role of art in fostering mental and emotional well-being.

Question 31: Where in paragraph 1 does the following sentence best fit?
Art therapy isn't about creating masterpieces; it's about using art as a tool for self-discovery, emotional regulation, and personal growth.

- A. [I] B. [II] C. [III] D. [IV]

Question 32: The phrase "work through" in paragraph 1 could be best replaced by _____.

- A. process B. manage C. resolve D. handle

Question 33: The word "It" in paragraph 2 refers to _____.

- A. art therapy B. verbal communication C. creative process D. non-verbal outlet

Question 34: According to paragraph 2, which of the following is NOT a benefit of art therapy for individuals with verbal communication difficulties?

- A. Enhanced vocabulary development
 B. Cathartic expression of feelings
 C. New perspectives on experiences
 D. Non-verbal emotional outlet

- Question 35:** Which of the following best summarises paragraph 3?
- A. Therapeutic artwork externalizes struggles, allowing clients and therapists to discuss and analyze the creative expression produced.
 - B. Art therapy cultivates problem-solving and communication skills by offering creative challenges and facilitating dialogue through artwork.
 - C. Creating art helps improve visual and spatial reasoning, leading to more effective communication through artistic mediums.
 - D. Art therapy encourages experimentation and decision-making, promoting overall adaptability and stronger therapeutic bonds.
- Question 36:** The word "decision-making" in paragraph 3 is OPPOSITE in meaning to ____.
- A. impulsing B. creativity C. indecision D. hesitancy
- Question 37:** Which of the following is TRUE according to the passage?
- A. Art therapy primarily focuses on enhancing verbal communication skills in individuals.
 - B. Art therapy is exclusively designed for individuals who identify as artists.
 - C. Art therapy can be beneficial for individuals across a wide range of populations and challenges.
 - D. Art therapy replaces traditional verbal psychotherapy methods entirely.
- Question 38:** Which of the following best paraphrases the [first sentence] in paragraph 4?
- A. Art therapy is a potent and adaptable method for personal development and healing.
 - B. Utilizing creativity, people can process feelings and learn new skills.
 - C. Creative expression empowers people to heal and grow as individuals.
 - D. Art therapy helps people improve specific coping mechanisms.
- Question 39:** Which of the following can be inferred from the passage?
- A. Only trained artists can fully benefit from the therapeutic effects of art therapy.
 - B. Art therapy is more effective than traditional talk therapy for treating trauma.
 - C. The primary goal of art therapy is to produce aesthetically pleasing artwork.
 - D. Engaging in artistic expression can contribute to improved mental and emotional well-being.
- Question 40:** Which of the following best summarises the passage?
- A. Art therapy offers a unique approach to mental health, emphasizing creative expression over verbal communication to heal trauma and enhance well-being, particularly for those struggling with traditional therapy.
 - B. Art therapy utilizes creative processes to facilitate emotional expression, improve coping mechanisms, and foster personal growth, benefiting diverse populations by addressing various challenges through non-verbal communication and problem-solving.
 - C. Through artistic mediums, art therapy promotes emotional healing and personal development by encouraging self-expression, building essential life skills, and fostering a deeper understanding of oneself and one's experiences.
 - D. Art therapy provides individuals with a powerful tool for self-discovery and healing by facilitating non-verbal communication, developing coping skills, and promoting positive mental health outcomes across a range of populations.

----- THE END -----

ĐÁP ÁN

Câu	1	2	3	4	5	6	7	8	9	10
Chọn	C	D	B	A	B	C	B	A	B	B
Câu	11	12	13	14	15	16	17	18	19	20
Chọn	B	D	C	D	D	C	C	C	A	B
Câu	21	22	23	24	25	26	27	28	29	30
Chọn	D	A	A	D	B	D	A	D	B	D
Câu	31	32	33	34	35	36	37	38	39	40
Chọn	C	A	A	A	B	C	C	A	D	B

Part 1. Read the following advertisement and choose the option that best fits each of the numbered blanks from 1 to 6.

Tired of traveling solo? 🌐 JourneyJunkie connects you with adventure buddies! 🤝

Ever wished you had someone to (1) _____ travel stories with? Someone to snap that perfect photo (2) _____ you in front of the Eiffel Tower?

JourneyJunkie is here to help!

Our platform (3) _____ travelers with similar interests, making it easy to find your perfect travel companion. Whether you're planning a (4) _____ or a month-long backpacking adventure, we've got you covered!

Sign up is free and easy! Just tell us about your travel style and what you're looking for in a travel buddy. You can browse profiles of other users, see their past trips, and even chat with them before (5) _____ to a trip together.

Join JourneyJunkie today and start (6) _____ the world with a new friend!



- | | | | | |
|--------------------|-----------------------|-----------------------|-----------------------|-----------------------|
| Question 1: | A. sharing | B. share | C. shared | D. sharable |
| Question 2: | A. on | B. of | C. by | D. at |
| Question 3: | A. builds | B. connects | C. makes | D. puts |
| Question 4: | A. city break weekend | B. weekend break city | C. break weekend city | D. weekend city break |
| Question 5: | A. to commit | B. committing | C. committed | D. commit |
| Question 6: | A. to explore | B. explore | C. explored | D. exploring |

Part 2. Read the following leaflet and choose the option that best fits each of the numbered blanks from 7 to 12.

Refresh Your Room Without Breaking the Bank!

Want a stylish room without the hefty price tag? It's easier than you think! With a little creativity, you can transform your space on a budget.

DIY Decor:

* Repurpose old (7) _____ as quirky vases or organizers. Add some personality with paint or patterned paper.

* (8) _____ old picture frames lying around? Give them new life by painting them and displaying pretty fabric scraps or pressed leaves.

* A (9) _____ strategically placed mirrors can make your room feel larger and brighter. Hit up thrift stores for unique finds.

Thrifty Finds & Clever Tricks:

* (10) _____ up your room with inexpensive fairy lights or string lights. Draping them around your bed or windows creates a cozy atmosphere.

* (11) _____ your bedding and curtains seasonally for an instant refresh. Look for sales and clearance items.

* (12) _____ buying expensive artwork, create your own! Frame pages from old books, maps, or even wrapping paper. You can also find free printable art online.

Start small and have fun with it! Your dream room is closer (and cheaper) than you think!

- Question 7:** A. lids B. jars C. boxes D. labels
- Question 8:** A. Much B. Several C. Little D. Any
- Question 9:** A. few B. much C. many D. little
- Question 10:** A. Shorten B. Darken C. Brighten D. Lessen
- Question 11:** A. Switch off B. Switch over C. Switch on D. Switch out
- Question 12:** A. Instead of B. Because of C. In case of D. In spite of

Part 3. Choose the option that indicate the best arrangement of utterances or sentences to make a meaningful exchange or text in each of the following questions from 13 to 17.

- Question 13:** a. Sarah: Makes sense! I should probably give that a try myself.
b. Lisa: Thanks! I've been focusing on eating more whole foods and cutting back on processed stuff.
c. Sarah: Wow, Lisa, you've lost weight! What's your secret?
- A. b - a - c B. c - a - b C. c - b - a D. b - c - a
- Question 14:** a. Liam: It looks really good! Do you use any specific techniques for shading?
b. Maya: Oh, just a quick sketch of this flower arrangement.
c. Liam: Hey, what are you working on?
d. Maya: Thanks! I'm trying out cross-hatching right now. It's a bit time-consuming but I like the effect.
e. Liam: Yeah, it adds a lot of depth. Maybe you could show me sometime?
- A. b - a - c - e - d B. b - d - e - a - c C. c - b - a - d - e D. e - d - c - a - b
- Question 15:** Hi Emily,
a. They have everything from math and science to history and art.
b. It's a fantastic resource for supplementing your studies or learning something new.
c. I remember you were asking about resources for online learning.
d. Khan Academy is a great platform with tons of free courses on various subjects.
e. Let me know if you have any other questions!
Best,
Jessica
- A. c - d - a - b - e B. c - b - d - a - e C. d - c - b - e - a D. c - e - d - a - b
- Question 16:** a. The process of working towards something, no matter how big or small, brings a sense of accomplishment and boosts my confidence.
b. Even when I face setbacks, I remind myself that progress, not perfection, is the ultimate goal.
c. Whether it's learning a new language or finally organizing my attic, each goal represents a step towards self-improvement.
d. Ultimately, the pursuit of goals keeps me motivated, engaged, and excited about life's possibilities.
e. Setting clear and achievable goals gives me direction and purpose.
- A. e - c - a - b - d B. c - d - a - b - e C. d - a - c - e - b D. b - c - e - a - d
- Question 17:** a. Others find solace in sitting by the pond, simply observing the gentle ripples of the water and the playful ducks gliding by.
b. Every morning, I see individuals practicing yoga amidst the vibrant flowerbeds, their movements fluid and focused.
c. It's a testament to the power of mindfulness in finding peace and grounding within ourselves, even amidst the chaos of the city.
d. These mindful moments offer a welcome respite from the constant distractions and demands of modern life.
e. The local park has become a haven for people practicing mindfulness in our bustling city.

A. c - b - d - a - e

B. e - b - c - a - d

C. e - b - a - d - c

D. e - d - a - b - c

Part 4. Read the following passage about *J.R.R. Tolkien's The Lord of the Rings* and choose the option that best fits each of the numbered blanks from 18 to 22.

J.R.R. Tolkien's *The Lord of the Rings*, comprised of *The Fellowship of the Ring*, *The Two Towers*, and *The Return of the King*, stands as a cornerstone of the fantasy genre. (18) _____, selling over 150 million copies worldwide and captivating readers with its intricate plot, compelling characters, and immersive world-building. Tolkien's meticulous creation of Middle-earth, (19) _____, established a benchmark for imaginative world-building that continues to inspire authors and filmmakers today.

The narrative revolves around the perilous quest to destroy the One Ring, an artifact of ultimate power coveted by the Dark Lord Sauron. This seemingly straightforward objective unfolds into a sweeping epic, traversing the vast landscapes of Middle-earth and exploring themes of good versus evil, friendship, sacrifice, and the corrupting nature of power. The narrative masterfully interweaves multiple storylines, following the journey of Frodo Baggins, (20) _____, and his companions as they confront constant danger and moral dilemmas.

While lauded for its intricate plot and expansive scope, *The Lord of the Rings* also garnered criticism for its prose, (21) _____. Despite this, the sheer depth of Tolkien's world-building, his creation of multiple languages and rich mythology, and his ability to craft memorable characters have cemented the trilogy's status as a landmark achievement in literature.

The impact of *The Lord of the Rings* extends far beyond the realm of fantasy literature. (22) _____. From tabletop role-playing games to blockbuster film adaptations, Tolkien's epic continues to resonate with audiences of all ages, offering a timeless tale of adventure, camaraderie, and the enduring struggle for good to triumph over evil.

- Question 18:**
- A. Published between 1954 and 1955, this epic saga achieved remarkable success
 - B. Despite being published between 1954 and 1955, the saga did not achieve success initially
 - C. Written over many years, the individual books were instant successes upon release
 - D. Though a remarkable success, the epic saga was not published between 1954 and 1955

- Question 19:**
- A. though hobbits, elves, and dwarves chose not to populate the area
 - B. and the population of hobbits, elves, dwarves, migrated there
 - C. populated by hobbits, elves, dwarves, and other fantastical beings
 - D. which were populated by hobbits, elves, dwarves, long ago

- Question 20:**
- A. the hobbit who was afraid of the Ring
 - B. a hobbit who didn't want to be entrusted with the Ring
 - C. the hobbit who tried to steal the Ring
 - D. the hobbit entrusted with the Ring

- Question 21:**
- A. which some readers felt was not dense or archaic enough
 - B. though all readers found it dense and archaic
 - C. and some readers wanted it to be more dense and archaic
 - D. which some readers found dense and archaic

- Question 22:**
- A. Though it inspired some writers, its impact on popular culture is debatable
 - B. It has, however, failed to inspire any notable adaptations in other mediums
 - C. Despite its popularity, it failed to inspire writers, artists, or filmmakers
 - D. It has inspired countless writers, artists, musicians, and filmmakers, leaving an indelible mark on popular culture

Part 5. Read the following passage about global wealth inequality and choose the best answer to each of the following questions from 23 to 30.

Global wealth inequality is undeniably [stark]. The richest 1% of the global population currently owns more than half of the world's wealth, while the bottom 50% owns a mere 1%. This means that a tiny fraction of the world's population controls

more resources than billions of people combined. This disparity isn't just a statistic; it translates to vastly different life outcomes, impacting access to education, healthcare, housing, and even basic necessities.

This level of economic inequality has far-reaching consequences. [It] can fuel social unrest, hinder economic growth, and exacerbate existing inequalities based on gender, race, and location. For instance, the World Bank estimates that extreme poverty is three times higher in countries with high levels of inequality compared to more equitable nations. This highlights how a concentration of wealth at the top can hinder opportunities for upward mobility and trap a significant portion of the population in a cycle of poverty.

[The causes of this immense wealth gap are complex and multifaceted]. Historical factors like colonialism and exploitation have played a significant role in shaping the current global economic order. Additionally, contemporary issues such as globalization, technological advancements, and government policies have contributed to widening the income and wealth divide both within and across nations.

Addressing global wealth disparities requires a multi-pronged approach. Implementing [progressive] taxation policies that require wealthier individuals and corporations to contribute a larger share of their income can help redistribute resources. Investing in social safety nets, quality education, and accessible healthcare systems is crucial to provide equal opportunities for everyone. Finally, promoting fair trade practices, responsible business conduct, and global cooperation are essential to create a more just and equitable world for all.

Question 23: Which of the following is NOT mentioned as a contributing factor to the global wealth gap?

- A. Natural disasters B. Colonialism C. Technological advancements D. Government policies

Question 24: The word "stark" in paragraph 1 is OPPOSITE in meaning to _____.

- A. subtle B. obvious C. alarming D. severe

Question 25: The word "It" in paragraph 2 refers to _____.

- A. cycle of poverty B. social unrest C. economic inequality D. upward mobility

Question 26: Which of the following best paraphrases the [first sentence] in paragraph 3?

- A. The causes of the significant wealth disparity are clear and singular.
B. The wealth gap is easily explained by a handful of historical events.
C. The reasons for the huge difference in wealth are complicated and have many sides.
D. The immense wealth gap has many simple and straightforward causes.

Question 27: The word "progressive" in paragraph 4 could be best replaced by _____.

- A. regressive B. graduated C. traditional D. conservative

Question 28: Which of the following is TRUE according to the passage?

- A. The World Bank believes inequality reduces poverty threefold.
B. Fair trade practices alone can solve wealth disparity.
C. The wealthiest 1% own more than half of the world's wealth.
D. The poorest 50% own less than 1% of global wealth.

Question 29: In which paragraph of the passage does the writer use a metaphor to describe the impact of wealth inequality on life outcomes?

- A. Paragraph 1 B. Paragraph 2 C. Paragraph 3 D. Paragraph 4

Question 30: In which paragraph of the passage does the writer propose solutions to address global wealth inequality?

Part 6. Read the following passage about Open Source Software (OSS) and choose the best answer to each of the following questions from 31 to 40.

[I] Open source software (OSS) has profoundly impacted innovation across various industries. [II] The collaborative nature of OSS development allows developers worldwide to |contribute to| and improve upon existing codebases, accelerating the pace of software creation and refinement. [III] Projects like Linux, the operating system that powers much of the internet, and Apache, the dominant web server software, exemplify the power of open source collaboration, demonstrating how collective effort can produce high-quality, widely adopted technologies. [IV]

The availability of free and modifiable source code is a key advantage of OSS. |This| allows businesses to tailor software solutions to their specific needs without licensing fees, significantly reducing development costs. Furthermore, the open nature of OSS promotes transparency and security. Since the code is publicly accessible, vulnerabilities can be identified and patched quickly by a large community of developers, enhancing the software's overall robustness. This rapid response to security concerns is often more efficient than the processes used for proprietary software.

Open source software has become the |building-block| for numerous groundbreaking innovations. The rise of cloud computing, for instance, relies heavily on open source technologies. Platforms like OpenStack, an open source cloud operating system, provide the infrastructure for many cloud service providers. Similarly, the development of artificial intelligence and machine learning has been fueled by open source libraries like TensorFlow and PyTorch, which offer researchers and developers powerful tools to build and deploy AI models.

|The open source movement fosters a culture of sharing and collaboration that transcends traditional corporate boundaries|. This collaborative ethos drives innovation by encouraging the rapid dissemination of knowledge and best practices. By removing barriers to access and facilitating collaborative development, OSS empowers individuals and organizations to build upon existing work, fostering a cycle of continuous improvement and ultimately leading to a faster pace of technological advancement.

- Question 31:** Where in paragraph 1 does the following sentence best fit?
This collaborative model lowers the barrier to entry for aspiring programmers, fostering a diverse and vibrant developer community.
- A. [I] B. [II] C. [III] D. [IV]
- Question 32:** The phrase "contribute to" in paragraph 1 could be best replaced by _____.
 A. help with B. give to C. work on D. add to
- Question 33:** The word "This" in paragraph 2 refers to _____.
 A. Reduced development costs B. The availability of free and modifiable source code C. Open source software development D. The key advantage of OSS
- Question 34:** According to paragraph 2, which of the following is NOT a benefit of OSS?
 A. Enhanced security
 B. Reduced development costs
 C. Increased licensing fees
 D. Improved robustness
- Question 35:** Which of the following best summarises paragraph 3?
 A. Key innovations like cloud computing and AI utilize open-source technology and readily available software libraries.

- B.** The growth of cloud computing and AI has benefited from open source, including platforms and powerful AI and ML tools.
- C.** OSS is fundamental to innovations like cloud computing and AI, with platforms such as OpenStack and libraries like TensorFlow being prime examples.
- D.** Open source has propelled cloud computing and AI through readily available platforms and accessible machine learning libraries.

Question 36: The word "building-block" in paragraph 3 is OPPOSITE in meaning to _____.

- A.** ramification **B.** aftereffect **C.** outcome **D.** byproduct

Question 37: Which of the following is TRUE according to the passage?

- A.** OSS always guarantees superior performance compared to proprietary software.
- B.** OSS facilitates quicker identification and resolution of software vulnerabilities.
- C.** OSS hinders innovation due to its collaborative development approach.
- D.** OSS development is primarily driven by large corporations.

Question 38: Which of the following best paraphrases the [first sentence] in paragraph 4?

- A.** Open source inspires shared work outside the normal confines of organizations.
- B.** Open source promotes a collaborative environment that goes beyond the typical limits of companies.
- C.** Open source encourages teamwork surpassing conventional corporate structures.
- D.** Open source cultivates joint efforts exceeding the usual reach of businesses.

Question 39: Which of the following can be inferred from the passage?

- A.** Proprietary software always has slower development cycles than OSS.
- B.** The primary benefit of OSS is its cost-effectiveness for businesses.
- C.** Cloud computing would not exist without open-source technologies.
- D.** The collaborative nature of OSS accelerates technological advancement.

Question 40: Which of the following best summarises the passage?

- A.** Open source software (OSS) fosters rapid innovation through global collaboration, reduced costs, enhanced security, and by serving as a foundation for advancements like cloud computing and AI, ultimately accelerating technological progress.
- B.** Open source software (OSS) promotes collaboration among developers, minimizing expenses, boosting security, and driving innovation in fields like cloud computing and AI, thereby accelerating the pace of technological change.
- C.** Open source software (OSS) enables widespread collaboration, lowering software development costs, improving security through transparency, and underpinning key technological advancements such as cloud computing and AI.
- D.** Open source software (OSS), through its collaborative nature, reduces costs, strengthens security, and fuels innovation in areas like cloud computing and AI, leading to faster technological development.

----- THE END -----

ĐÁP ÁN

Câu	1	2	3	4	5	6	7	8	9	10
Chọn	B	B	B	D	B	D	B	B	A	C
Câu	11	12	13	14	15	16	17	18	19	20
Chọn	D	A	C	C	A	A	C	A	C	D
Câu	21	22	23	24	25	26	27	28	29	30
Chọn	D	D	A	A	C	C	B	C	A	D
Câu	31	32	33	34	35	36	37	38	39	40
Chọn	C	D	B	C	C	B	B	B	D	A

Part 1. Read the following advertisement and choose the option that best fits each of the numbered blanks from 1 to 6.

✂ Take Control of Your Future with Financial Literacy! ✂

Are you tired of feeling (1) _____ when it comes to managing your money? Do you wish you had a better understanding of (2) _____?

Financial literacy is essential for everyone, regardless of age or income. It empowers you to make informed decisions about your money and achieve your financial goals.

Take our quiz to test your knowledge!

1. What does it mean (3) _____ "live within your means"?
2. What is the best way (4) _____ an emergency fund?
3. Is it important (5) _____ your spending?
4. What is a budget and why is (6) _____ one important?

Start your journey towards financial freedom today!



- | | | | | |
|--------------------|--------------------------------|--------------------------------|--------------------------------|--------------------------------|
| Question 1: | A. loss | B. lose | C. losing | D. lost |
| Question 2: | A. personal financial planning | B. personal planning financial | C. financial planning personal | D. planning financial personal |
| Question 3: | A. for | B. with | C. to | D. on |
| Question 4: | A. building | B. built | C. to building | D. to build |
| Question 5: | A. to track | B. tracking | C. tracked | D. track |
| Question 6: | A. have | B. had | C. having | D. to have |

Part 2. Read the following leaflet and choose the option that best fits each of the numbered blanks from 7 to 12.

Developing a Strong Work Ethic: Your Key to Success!

Want to stand out and achieve your goals? A strong work ethic is essential! It's more than just showing up; it's about attitude and action. Cultivate these habits and watch your (7) _____ blossom!

* Be Punctual: Arrive on time, every time. Being late shows disrespect and lack of (8) _____.

* Take Initiative: Don't wait to be told what to do. Seek out opportunities to contribute and (9) _____ new challenges.

* Show Dedication: Put in (10) _____ best effort, even when tasks are challenging. Perseverance builds resilience and expertise.

* Be Responsible: Own your actions. If you make a mistake, learn from it and move forward. (11) _____ setbacks, maintain a positive attitude.

* Maintain Focus: Minimize distractions and dedicate yourself to the task at hand. A little (12) _____ of focus can go a long way in boosting productivity.

Developing a strong work ethic is a journey, not a destination. Start today and reap the rewards throughout your career!

- | | | | | |
|--------------------|------------|------------|-------------|---------------|
| Question 7: | A. success | B. failure | C. problems | D. challenges |
|--------------------|------------|------------|-------------|---------------|

- Question 8:** A. commitment B. experience C. knowledge D. resources
- Question 9:** A. take in B. take after C. take off D. take on
- Question 10:** A. our B. your C. his D. her
- Question 11:** A. Due to B. Instead of C. Because of D. In spite of
- Question 12:** A. few B. several C. bit D. many

Part 3. Choose the option that indicate the best arrangement of utterances or sentences to make a meaningful exchange or text in each of the following questions from 13 to 17.

- Question 13:** a. Lisa: Thanks, Sarah! Yeah, I decided to try balayage highlights.
 b. Sarah: Wow, Lisa, your hair looks amazing! Is that a new style?
 c. Sarah: It really suits you! I might have to ask for that at my next appointment.
- A. b - c - a B. b - a - c C. c - a - b D. c - b - a
- Question 14:** a. David: It'll be interesting to see how it develops and what impact it has on the real world.
 b. Emily: Definitely. It feels like we're on the cusp of something big.
 c. Emily: I know! It's like a whole new economy is emerging.
 d. Emily: Did you see the news about that artist who sold a virtual sculpture for millions?
 e. David: Yeah, it's crazy how valuable digital assets are becoming in virtual worlds.
- A. b - e - c - d - a B. c - e - b - d - a C. d - e - c - a - b D. d - c - b - a - e
- Question 15:** Hey Jessica,
 a. Google is the obvious choice for my resume, but the startup aligns more with my passion for sustainability.
 b. What do you think I should do?
 c. I've been offered two amazing internships: one at Google and one at a small tech startup.
 d. I need your advice on a big decision.
 e. Let's grab coffee next week and chat!
 Best,
 Maria
- A. d - c - a - b - e B. d - e - c - a - b C. b - a - e - c - d D. e - d - b - c - a
- Question 16:** a. Masterpieces like "The Shining" by Stephen King transcend mere scares, offering insightful commentary on social issues and the human psyche.
 b. Exploring themes of death, isolation, and the unknown, horror forces us to confront the darkness both within ourselves and in the world around us.
 c. The genre of horror, despite its reputation for cheap thrills, offers a unique exploration of our deepest fears.
 d. From the unsettling dread of cosmic horror exemplified by H.P. Lovecraft's works to the visceral terror of slasher films like "Halloween," horror provides a cathartic release.
 e. Ultimately, horror reminds us of our vulnerability and the fragility of our existence, leaving a lasting impact long after the credits roll.
- A. c - d - b - a - e B. d - c - e - a - b C. d - a - e - c - b D. d - e - b - a - c
- Question 17:** a. This influx of new residents has led to a surge in property values, with median home prices nearly doubling in the last five years.
 b. Quaint bungalows are being renovated and modern apartment complexes are springing up, changing the landscape of this historic neighborhood.
 c. Despite the rapid development, Echo Park retains its unique charm, attracting those seeking a vibrant community with a touch of old-school Los Angeles.
 d. Fueled by its proximity to downtown and trendy Silver Lake, Echo Park has become a magnet for young professionals and artists.
 e. The once sleepy neighborhood of Echo Park in Los Angeles has experienced a dramatic transformation in recent years.

A. d - c - a - e - b

B. b - c - e - d - a

C. c - b - e - a - d

D. e - d - a - b - c

Part 4. Read the following passage about the Himalayas and choose the option that best fits each of the numbered blanks from 18 to 22.

(18) _____, Nepal, and Bhutan. This awe-inspiring mountain range boasts the planet's highest peaks, including the legendary Mount Everest, (19) _____. Formed by the collision of the Indian and Eurasian tectonic plates, the Himalayas are a testament to the immense power of geological forces that continue to shape our world.

The Himalayas exert a profound influence on the climate and ecosystems of the surrounding regions. Acting as a massive barrier, (20) _____, thereby creating a stark climatic divide between the Tibetan Plateau and the Indian subcontinent. The southern slopes of the Himalayas receive abundant rainfall, supporting lush forests teeming with diverse flora and fauna, while the northern slopes are characterized by an arid, high-altitude desert environment.

The cultural landscape of the Himalayas is as varied as its topography. Home to numerous ethnic groups, each with its unique language, traditions, and beliefs, the region is a vibrant tapestry of human adaptation and resilience. For centuries, (21) _____ have shaped the lifestyles and livelihoods of the Himalayan people, many of whom rely on subsistence agriculture, pastoralism, and trade for their survival.

(22) _____, spiritual seekers, and nature enthusiasts from around the globe. Whether it's the thrill of scaling a towering peak, the serenity of ancient monasteries perched high in the mountains, or the breathtaking beauty of pristine landscapes, the Himalayas offer a unique and unforgettable experience for those who venture into their embrace.

- Question 18:**
- A. The Appalachian Mountains, known for their biodiversity, stretch across the eastern part of North America, covering parts of Canada and the United States
 - B. The Andes Mountains, a vast mountain range in South America, run along the western edge of the continent, spanning several countries
 - C. The Himalayas, often called the "Roof of the World," dominate the Asian continent, stretching over 1,500 miles across the northern borders of India
 - D. The Alps, located in Central Europe, are a popular tourist destination known for their stunning scenery and winter sports opportunities
- Question 19:**
- A. which towers at a breathtaking 29,031.7 feet above sea level
 - B. which presents a formidable challenge for even the most experienced mountaineers
 - C. where ancient civilizations thrived thousands of years ago, leaving behind fascinating ruins
 - D. whose snowy peaks are visible for miles, inspiring awe and wonder in all who behold them
- Question 20:**
- A. they provide a vital source of freshwater for the surrounding areas through numerous rivers and glaciers
 - B. they create a unique microclimate that supports a wide variety of plant and animal life
 - C. they block cold, dry winds from Central Asia
 - D. they offer stunning panoramic views and trekking opportunities for adventure seekers
- Question 21:**
- A. the rich cultural heritage and spiritual traditions passed down through generations
 - B. the availability of natural resources and the development of trade routes
 - C. the influence of globalization and the increasing influx of tourists
 - D. the challenging terrain and unpredictable weather patterns
- Question 22:**
- A. Due to their strategic location and geopolitical importance, the Himalayas have been the site of numerous conflicts and disputes
 - B. Despite their remoteness and the challenges of living in such extreme environments, the Himalayas hold a powerful allure for adventurers
 - C. Because of their rich biodiversity and ecological significance, the Himalayas attract scientists and researchers from all over the world
 - D. With their growing popularity as a tourist destination, the Himalayas provide economic opportunities for local communities

Part 5. Read the following passage about the evolution of law enforcement and choose the best answer to each of the following questions from 23 to 30.

The evolution of law enforcement has been [dynamic], shaped by societal changes, technological advancements, and evolving understandings of justice. From ancient civilizations to modern times, the methods and structures of maintaining order have undergone significant transformations.

In early societies, law enforcement was often informal and community-based. For example, in ancient Egypt, communities relied on a system of mutual responsibility, where neighbors were expected to police [themselves] and report crimes. Similarly, during the Middle Ages in Europe, small towns often had a single constable or a night watch made up of citizens who took turns patrolling the streets. These early forms of law enforcement, while rudimentary, provided a basic level of order and security.

[The rise of modern nation-states in the 18th and 19th centuries led to the development of more formalized and centralized police forces]. The creation of London's Metropolitan Police in 1829, often cited as the first modern police force, marked a significant shift towards professional, structured, and bureaucratic law enforcement agencies. This model, emphasizing crime prevention and order maintenance through a visible police presence, quickly spread throughout Europe and North America.

The 20th and 21st centuries have seen law enforcement become increasingly [sophisticated]. The advent of new technologies, such as forensic science, DNA analysis, and sophisticated surveillance systems, has significantly enhanced the investigative and crime-solving capabilities of police forces. Moreover, there has been a growing emphasis on community policing, diversity within law enforcement agencies, and the ethical use of technology and force. As societies continue to evolve, so too will the methods and strategies employed by law enforcement agencies in their pursuit of justice and public safety.

Question 23: Which of the following is NOT mentioned as a technological advancement in law enforcement?

- | | | | |
|---------------------------------------|----------------------------|--|------------------------|
| A. Facial recognition software | B. Forensic science | C. Sophisticated surveillance systems | D. DNA analysis |
|---------------------------------------|----------------------------|--|------------------------|

Question 24: The word "dynamic" in paragraph 1 is OPPOSITE in meaning to _____.

- | | | | |
|-------------------|--------------------|--------------------|------------------|
| A. complex | B. evolving | C. constant | D. static |
|-------------------|--------------------|--------------------|------------------|

Question 25: The word "themselves" in paragraph 2 refers to _____.

- | | | | |
|-----------------------|---------------------|----------------------|--------------------|
| A. communities | B. neighbors | C. constables | D. citizens |
|-----------------------|---------------------|----------------------|--------------------|

Question 26: Which of the following best paraphrases the [first sentence] in paragraph 3?

- A.** Modern nation-states of the 18th and 19th centuries dismantled existing police forces to create centralized ones.
- B.** Formalized and centralized police forces caused the rise of modern nation-states in the 18th and 19th centuries.
- C.** The emergence of modern countries in the 1700s and 1800s resulted in the creation of more official and centralized police organizations.
- D.** The rise of modern nation-states prevented the development of formalized police forces in the 18th and 19th centuries.

Question 27: The word "sophisticated" in paragraph 4 could be best replaced by _____.

- | | | | |
|-----------------------|--------------------|------------------|--------------------|
| A. traditional | B. advanced | C. simple | D. outdated |
|-----------------------|--------------------|------------------|--------------------|

Question 28: Which of the following is TRUE according to the passage?

- A.** Community policing was less important in the 20th and 21st centuries than before.
- B.** London's Metropolitan Police is considered a pioneering model for modern police forces.
- C.** Early law enforcement relied heavily on advanced technology for crime prevention.
- D.** The methods of law enforcement have remained largely unchanged throughout history.

- Question 29:** In which paragraph of the passage does the writer mention the use of past perfect tense?
- A. Paragraph 1 B. Paragraph 2 C. Paragraph 3 D. Paragraph 4
- Question 30:** In which paragraph of the passage does the writer contrast informal community-based policing with more formalized structures?
- A. Paragraph 1 B. Paragraph 2 C. Paragraph 3 D. Paragraph 4

Part 6. Read the following passage about the philosophy of friendship and choose the best answer to each of the following questions from 31 to 40.

The philosophy of friendship delves into the nature of these vital bonds, exploring what constitutes true friendship and its importance in human life. [I] Aristotle, for example, distinguished three types of friendship: those based on utility, pleasure, and shared virtue. [II] He zeroed in on the idea that true friendship, based on mutual respect and admiration for each other's character, is essential for human flourishing. [III] This emphasizes the idea that genuine connection goes beyond mere convenience or shared enjoyment. [IV]

This Aristotelian concept of virtue-based friendship has resonated through philosophical thought. It suggests that true friends encourage each other to become better versions of themselves, supporting one another's moral development. [This] emphasis on mutual growth and support contrasts sharply with more transactional friendships, where the relationship serves a primarily practical or fleeting purpose. Think of the difference between a friend who helps you move furniture and one who challenges you to rethink your prejudices. The latter embodies the kind of transformative influence that true friendship can offer.

The digital age presents new and complex challenges to our understanding of friendship. The rise of social media has led to a proliferation of online connections, blurring the lines between acquaintance and genuine friend. This ever-evolving landscape of online interaction raises questions about the depth and authenticity of these digital friendships. Can online connections, often characterized by fleeting interactions and performative displays, truly provide the same level of emotional support and personal growth as face-to-face relationships? Furthermore, the ease with which online "friendships" can be formed and dissolved raises concerns about the potential for superficiality and a diminished appreciation for the effort required to cultivate genuine connection.

[Ultimately, exploring the philosophy of friendship encourages us to reflect on the quality of our own relationships]. By understanding the different forms friendship can take and the values that underpin them, we can better cultivate the kinds of bonds that enrich our lives and contribute to our overall well-being. This requires us to move beyond superficial connections and actively seek out relationships based on mutual respect, shared values, and a genuine desire for each other's happiness.

- Question 31:** Where in paragraph 1 does the following sentence best fit?
Philosophers throughout history have contemplated the value of friendship, often contrasting it with familial ties and romantic love.
- A. [I] B. [II] C. [III] D. [IV]
- Question 32:** The phrase "zeroed in on" in paragraph 1 could be best replaced by _____.
- A. centered upon B. focused on C. stressed over D. honed in on
- Question 33:** The word "This" in paragraph 2 refers to _____.
- A. supporting moral development B. a transactional friendship C. the virtue-based view of friendship D. transformative influence
- Question 34:** According to paragraph 2, which of the following is NOT a characteristic of a true friendship?

- A. Shared values
- B. Mutual growth
- C. Moral support
- D. Serving a fleeting purpose

Question 35: Which of the following best summarises paragraph 3?

- A. The changing nature of online friendships strengthens our understanding of traditional relationships.
- B. Online connections offer the same level of support as in-person ones despite differences in interaction.
- C. Digital interactions promote meaningful friendships by connecting people across geographical boundaries.
- D. Social media's rise makes it difficult to distinguish true friends from acquaintances, raising doubts about online friendships' depth and authenticity.

Question 36: The word "ever-evolving" in paragraph 3 is OPPOSITE in meaning to _____.

- A. static
- B. constant
- C. unchanging
- D. fixed

Question 37: Which of the following is TRUE according to the passage?

- A. Online friendships consistently offer the same depth as face-to-face relationships.
- B. True friendship involves mutual respect and shared values, leading to personal growth.
- C. Modern technology eliminates the challenges in maintaining meaningful connections.
- D. Aristotle believed that all types of friendships are equally important for well-being.

Question 38: Which of the following best paraphrases the [first sentence] in paragraph 4?

- A. Ignoring the ideas of friendship lets us find fulfilling connections.
- B. Contemplating friendship's nature improves all social interactions.
- C. Philosophizing about friends helps make more agreeable companions.
- D. Examining the philosophy of friendship prompts us to evaluate our relationships.

Question 39: Which of the following can be inferred from the passage?

- A. Aristotle's philosophy is irrelevant to understanding online friendships.
- B. Transactional friendships are entirely without value in modern society.
- C. Digital platforms consistently hinder the development of genuine connections.
- D. Cultivating meaningful friendships requires conscious effort and discernment.

Question 40: Which of the following best summarises the passage?

- A. Aristotle's categorization of friendships reveals that online connections lack depth, making true friendship impossible in the digital age and emphasizing the need for traditional interactions.
- B. Although social media complicates friendship by blurring the lines between real friends and acquaintances, embracing Aristotle's emphasis on virtue-based relationships can enhance our well-being.
- C. While digital communication expands social circles, it threatens genuine connection by prioritizing superficial interactions; therefore, true friendships remain elusive in modern society.
- D. True friendship, based on shared virtue and mutual respect as highlighted by Aristotle, fosters personal growth, unlike transactional relationships; however, the digital age presents new challenges to forming authentic connections, urging reflection on the quality of our relationships.

----- THE END -----

ĐÁP ÁN

Câu	1	2	3	4	5	6	7	8	9	10
Chọn	D	A	C	D	A	C	A	A	D	B
Câu	11	12	13	14	15	16	17	18	19	20
Chọn	D	C	B	C	A	A	D	C	A	C
Câu	21	22	23	24	25	26	27	28	29	30
Chọn	D	B	A	D	B	C	B	B	D	B
Câu	31	32	33	34	35	36	37	38	39	40
Chọn	A	B	C	D	D	C	B	D	D	D

Part 1. Read the following advertisement and choose the option that best fits each of the numbered blanks from 1 to 6.

🌐 TRAVEL THE WORLD WITH YOUR TRIBE 🌐

Tired of (1) _____ your trips alone? Do you struggle (2) _____ finding travel buddies who share your interests? Say goodbye to solo adventures and hello to TravelTribe!

Our platform connects you with like-minded individuals who are (3) _____ in exploring the same destinations. Whether you're a foodie (4) _____ in local delicacies or a history buff eager to discover ancient ruins, TravelTribe helps you (5) _____ your perfect travel squad.

Join today and embark on (6) _____ with new friends who share your passion for travel!



- | | | | | |
|--------------------|-----------------------------------|-----------------------------------|-----------------------------------|-----------------------------------|
| Question 1: | A. plan | B. planned | C. planning | D. to plan |
| Question 2: | A. with | B. for | C. on | D. to |
| Question 3: | A. interest | B. interests | C. interested | D. interesting |
| Question 4: | A. looked to indulge | B. look to indulge | C. looking to indulge | D. looking indulging |
| Question 5: | A. make | B. find | C. build | D. get |
| Question 6: | A. unforgettable adventures group | B. adventures group unforgettable | C. group unforgettable adventures | D. unforgettable group adventures |

Part 2. Read the following leaflet and choose the option that best fits each of the numbered blanks from 7 to 12.

Making the Most of Your Summer Break!

Summer's here – a time for fun, relaxation, and making memories! Don't let those precious weeks slip away. Maximize your summer with (7) _____ simple tips:

Embrace the Outdoors: Spend (8) _____ hours each day soaking up the sun. Go for a hike in the mountains, have a picnic in the park, or simply relax by the beach. Fresh air and sunshine can greatly improve your (9) _____.

Learn Something New: Summer is the perfect time to (10) _____ a new skill. Try painting, learn a new language, or take up a musical instrument. Challenge yourself and expand your horizons!

Reconnect and Recharge: Summer allows us to spend quality time with loved ones. Organize a barbecue, go on a road trip with friends, or simply enjoy a family dinner (11) _____. These moments create lasting memories.

Plan Your Adventures: Don't let summer pass you by without experiencing something new. Visit a local museum, explore a nearby city, or try (12) _____ cuisine. A little planning can go a long way! Make this your best summer yet!

- | | | | | |
|--------------------|---------|-----------|----------|----------|
| Question 7: | A. this | B. that | C. those | D. these |
| Question 8: | A. many | B. little | C. a few | D. much |
| Question 9: | A. mood | B. work | C. style | D. habit |

- Question 10:** A. carry on B. give up C. pick up D. put down
- Question 11:** A. on home B. by home C. in home D. at home
- Question 12:** A. exotic B. expensive C. elaborate D. excessive

Part 3. Choose the option that indicate the best arrangement of utterances or sentences to make a meaningful exchange or text in each of the following questions from 13 to 17.

- Question 13:** a. John: Really? I've heard the music is amazing. Did you find the story engaging?
b. Sarah: I went to see "Hamilton" last night - it was incredible!
c. Sarah: Absolutely! Lin-Manuel Miranda is a genius at weaving history and music together.
A. c - b - a B. b - c - a C. b - a - c D. c - a - b
- Question 14:** a. Emily: Yeah, I think so. I have a few left, I can send you one!
b. Emily: Exactly! It's like live podcasts and discussions. I joined a really interesting room yesterday about filmmaking.
c. David: Yeah, isn't it that audio-only social media app?
d. Emily: Have you heard of Clubhouse? Everyone's talking about it!
e. David: Hmm, sounds intriguing. Do you need an invite to join?
A. e - b - c - d - a B. e - b - a - d - c C. e - b - d - c - a D. d - c - b - e - a
- Question 15:** Hi Grandma,
a. It feels like ages since I last visited and saw everyone.
b. See you soon!
c. Just wanted to let you know I'll be visiting next week!
d. Dad said you've been teaching him how to bake bread in the wood-fired oven? I can't wait to try some!
e. I'm really looking forward to spending some time in Maple Creek.
Love,
Jenny
A. d - c - a - e - b B. e - d - b - a - c C. c - e - a - d - b D. d - e - c - a - b
- Question 16:** a. It's a powerful medium for communication and self-expression, allowing me to connect with others on a deeper level.
b. Photography, for me, is more than just capturing an image; it's about freezing a fleeting moment in time.
c. The play of light and shadow, the raw emotion on someone's face, the unexpected beauty in everyday objects – these are the things that draw me to the lens.
d. Through photography, I can share my unique perspective with the world, telling stories without uttering a single word.
e. In essence, photography is my way of making sense of the world around me and sharing its wonders with others.
A. e - b - d - a - c B. e - a - d - b - c C. d - b - a - e - c D. b - c - d - a - e
- Question 17:** a. Mobile banking apps now allow us to manage our accounts, pay bills, and even invest with just a few taps on our smartphones.
b. While this increased convenience is undeniable, it also raises concerns about data security and privacy.
c. The rise of online banking has dramatically changed the way we interact with our finances.
d. Gone are the days of physically visiting a bank branch for every transaction.
e. It's crucial to choose reputable institutions and take precautions to protect our financial information in the digital age.
A. c - d - a - b - e B. e - b - a - d - c C. b - c - e - a - d D. d - e - a - b - c

Part 4. Read the following passage about *Sydney* and choose the option that best fits each of the numbered blanks from 18 to 22.

(18) _____. This iconic nickname perfectly captures the essence of Sydney, (19) _____. From the soaring white sails of the Sydney Opera House to the steel arch of the Harbour Bridge, this bustling waterway is the undeniable heart of the city.

Founded in 1788 as a British penal colony, Sydney has transformed into a vibrant, multicultural metropolis. Today, it is home to over five million residents who represent a rich tapestry of cultures and backgrounds. This diversity is reflected in everything from the city's dynamic culinary scene to its vibrant arts and cultural institutions. Whether exploring the historic Rocks district, (20) _____, or relaxing on the golden sands of Bondi Beach, visitors to Sydney are sure to be captivated by its unique energy and charm.

Sydney's temperate climate allows residents and visitors alike to enjoy its many outdoor attractions year-round. The Royal Botanic Garden, a 74-acre oasis in the heart of the city, provides a tranquil escape from the urban bustle. For breathtaking panoramic views, a climb to the summit of the Harbour Bridge is an unforgettable experience. Numerous ferries crisscross the harbor, offering a unique perspective on the city's iconic landmarks and (21) _____.

(22) _____. Its stunning natural beauty, coupled with its cosmopolitan atmosphere and vibrant cultural scene, ensures that the Harbour City will continue to captivate the imaginations of travelers from around the globe.

- Question 18:**
- A. Melbourne, Australia's second-largest city, has been called the Harbour City for decades
 - B. Australia's oldest city, known as the Harbour City, is affectionately called Sydney
 - C. The Harbour City, also known as Canberra, is Australia's largest and oldest city
 - D. Sydney, Australia's oldest and largest city, is affectionately known as the Harbour City

- Question 19:**
- A. with a sprawling harbor dramatically situated around the natural city
 - B. which is dramatically situated around a sprawling natural harbor
 - C. which sprawls dramatically around a city with a natural harbor
 - D. where dramatic natural harbors are sprawling throughout the city

- Question 20:**
- A. taking a relaxing stroll through Hyde Park
 - B. browsing the stalls at Paddy's Market
 - C. enjoying a ferry ride to Manly Beach
 - D. visiting the iconic Sydney Opera House

- Question 21:**
- A. providing convenient transportation between the city's many piers
 - B. offering scenic views of the open ocean and distant coastline
 - C. transporting passengers to charming harborside suburbs like Manly and Watsons Bay
 - D. showcasing the city's impressive skyline and bustling harbor activity

- Question 22:**
- A. With its diverse attractions, everyone seeking cultural immersion in Sydney can find adventure
 - B. For those seeking adventure and sunshine, Sydney offers cultural immersion and something for everyone
 - C. Whether one seeks adventure, cultural immersion, or simply a chance to soak up the sun, Sydney offers something for everyone
 - D. Sydney offers cultural immersion for everyone, whether one seeks adventure or sunshine

Part 5. Read the following passage about the ethical considerations surrounding fertility treatments and choose the best answer to each of the following questions from 23 to 30.

Fertility treatments, while offering hope to many, exist in a |complex| ethical landscape. These technologies, ranging from in-vitro fertilization (IVF) to surrogacy, raise profound questions about the beginning of life, the rights of parents, and the societal implications of manipulating reproduction. The very existence of these technologies challenges long-held beliefs and necessitates thoughtful consideration of their implications.

One key area of debate centers on the status of embryos. IVF, for example, often involves creating multiple embryos, raising the question of their moral status and what should happen to those not implanted. Some argue that |they| are deserving of the same rights and protections as any other human being, while others believe that such status is only conferred upon implantation and a certain stage of development. These differing viewpoints often underpin arguments for or against embryo research or the disposal of unused embryos.

[Another significant ethical concern revolves around access and equity]. Fertility treatments can be incredibly expensive, often placing them out of reach for many individuals and couples. This disparity raises concerns about fairness and whether having a biological child should be accessible only to those with significant financial resources. Additionally, questions arise about the potential for these technologies to exacerbate existing social inequalities.

Furthermore, the increasing [sophistication] of genetic testing alongside fertility treatments fuels ethical debates about designer babies. Technologies like preimplantation genetic diagnosis (PGD) allow for the screening of embryos for genetic disorders, but also open the door to selecting for non-medical traits like eye color or height. This possibility raises concerns about eugenics and the potential for discrimination against individuals with disabilities.

Question 23: Which of the following is NOT mentioned as a potential ethical concern related to fertility treatments?

- | | | | |
|--------------------------------------|---|---|--|
| A. The high cost of treatment | B. Religious objections to artificial reproduction | C. The potential for designer babies | D. The status of unused embryos |
|--------------------------------------|---|---|--|

Question 24: The word "complex" in paragraph 1 is OPPOSITE in meaning to _____.

- | | | | |
|---------------------|--------------------|------------------|-----------------------|
| A. necessary | B. advanced | C. simple | D. challenging |
|---------------------|--------------------|------------------|-----------------------|

Question 25: The word "they" in paragraph 2 refers to _____.

- | | | | |
|-------------------|----------------------|---------------------|---------------------|
| A. embryos | B. viewpoints | C. arguments | D. questions |
|-------------------|----------------------|---------------------|---------------------|

Question 26: Which of the following best paraphrases the [first sentence] in paragraph 3?

- A.** Fair access to fertility treatment is another important ethical consideration.
- B.** Everyone should have equal access to any fertility treatment they desire.
- C.** Ethical concerns about fertility treatments only relate to the wealthy.
- D.** The cost of fertility treatments is not an ethical issue.

Question 27: The word "sophistication" in paragraph 4 could be best replaced by _____.

- | | | | |
|-------------------|------------------------|--------------------------|-----------------------|
| A. expense | B. availability | C. simplification | D. advancement |
|-------------------|------------------------|--------------------------|-----------------------|

Question 28: Which of the following is TRUE according to the passage?

- A.** PGD allows for the screening of embryos for genetic disorders.
- B.** Genetic testing can guarantee a baby's eye color and height.
- C.** IVF always involves the use of donor eggs.
- D.** Surrogacy is the only fertility treatment discussed.

Question 29: In which paragraph of the passage does the writer discuss the moral status of embryos?

- | | | | |
|-----------------------|-----------------------|-----------------------|-----------------------|
| A. Paragraph 1 | B. Paragraph 2 | C. Paragraph 3 | D. Paragraph 4 |
|-----------------------|-----------------------|-----------------------|-----------------------|

Question 30: In which paragraph of the passage does the writer introduce the overall ethical concerns surrounding fertility treatments?

- | | | | |
|-----------------------|-----------------------|-----------------------|-----------------------|
| A. Paragraph 1 | B. Paragraph 2 | C. Paragraph 3 | D. Paragraph 4 |
|-----------------------|-----------------------|-----------------------|-----------------------|

Part 6. Read the following passage about the importance of national parks and choose the best answer to each of the following questions from 31 to 40.

[I] National parks play a vital role in preserving the natural and cultural heritage of a nation. [II] These protected areas safeguard diverse ecosystems, ranging from lush rainforests to arid deserts, and offer sanctuary to countless plant and animal species. [III] By setting aside these lands, nations effectively [set aside] areas for conservation, research, education, and recreation, ensuring that future generations can appreciate the wonders of the natural world and learn from the past. [IV]

These protected lands serve as living laboratories for scientific research, enabling researchers to study ecological processes, monitor biodiversity, and understand the impacts of climate change. The data collected in these natural environments is invaluable for developing conservation strategies, managing natural resources sustainably, and informing environmental policy decisions. Furthermore, [it] provides educational opportunities for students of all ages, fostering a deeper understanding and appreciation of the natural world.

Beyond their scientific and educational value, national parks provide significant economic benefits. They attract tourists from around the globe, generating revenue for local communities through park entrance fees, lodging, restaurants, and other tourism-related businesses. For example, the United States National Park System, comprising over 400 areas covering more than 84 million acres, receives over 300 million visitors annually, contributing billions of dollars to the national economy. This [eco-tourism] not only supports local economies but also incentivizes conservation efforts by demonstrating the economic value of protecting natural resources.

[In conclusion, national parks are far more than just scenic landscapes; they are essential for biodiversity conservation, scientific advancement, cultural preservation, and economic development]. By protecting these invaluable natural and cultural treasures, we invest in the well-being of our planet and ensure that future generations can experience the wonders of our world.

- Question 31:** Where in paragraph 1 does the following sentence best fit?
Moreover, national parks often protect sites of historical or archaeological significance, preserving evidence of past civilizations and offering insights into human history.
- A. [I] B. [II] C. [III] D. [IV]
- Question 32:** The phrase "set aside" in paragraph 1 could be best replaced by _____.
A. extract B. reserve C. remove D. detach
- Question 33:** The word "it" in paragraph 2 refers to _____.
A. the change B. the research C. the impact D. the data
- Question 34:** According to paragraph 2, which of the following is NOT a benefit of national parks for scientific research?
A. Monitoring biodiversity
B. Understanding climate change impacts
C. Promoting international tourism
D. Studying ecological processes
- Question 35:** Which of the following best summarises paragraph 3?
A. National parks boost local economies through tourism revenue generated by visitors, demonstrating the economic value of conservation.
B. Tourism in national parks brings significant financial advantages, proving the economic worth of preserving natural resources.
C. National parks offer substantial economic returns via tourism, showing the monetary benefits of environmental protection.
D. Numerous visitors to national parks create substantial economic gains, illustrating the financial merits of these spaces.
- Question 36:** The word "eco-tourism" in paragraph 3 is OPPOSITE in meaning to _____.
A. eco-vandalism B. bio-invasion C. over-farming D. mass-tourism
- Question 37:** Which of the following is TRUE according to the passage?
A. National parks solely benefit the local communities surrounding them.
B. National parks contribute to scientific research, education, and economic growth.

- C. National parks primarily focus on preserving scenic landscapes for recreation.
- D. National parks hinder economic development due to restrictions on land use.

Question 38: Which of the following best paraphrases the [first sentence] in paragraph 4?

- A. National parks are valuable for ecological balance, study, heritage, and financial gain.
- B. National parks are important for the environment, research, history, and local business.
- C. National parks are crucial for preserving species, scientific progress, protecting culture, and boosting economies.
- D. National parks are essential for wildlife, knowledge growth, cultural legacy, and economic advancement.

Question 39: Which of the following can be inferred from the passage?

- A. Local communities always benefit economically from the establishment of national parks.
- B. The US National Park System is the largest and most economically beneficial globally.
- C. Protecting national parks is an investment in the future of the planet.
- D. Scientific research in national parks is primarily focused on attracting tourists.

Question 40: Which of the following best summarises the passage?

- A. National parks protect diverse ecosystems, providing opportunities for scientific study and educational experiences, while also stimulating local economies through tourism and promoting sustainable resource management.
- B. National parks are vital for preserving biodiversity and cultural heritage, supporting scientific research and education, and boosting local economies through eco-tourism, ultimately benefiting the planet's future.
- C. Offering sanctuary to various species, national parks facilitate research, education, and tourism, generating economic benefits while showcasing the importance of environmental conservation for future generations.
- D. As crucial spaces for conservation and research, national parks contribute significantly to education and economic growth through tourism, highlighting the interconnectedness of environmental protection and societal well-being.

----- THE END -----

ĐÁP ÁN

Câu	1	2	3	4	5	6	7	8	9	10
Chọn	C	A	C	C	C	D	D	C	A	C
Câu	11	12	13	14	15	16	17	18	19	20
Chọn	D	A	C	D	C	D	A	D	B	B
Câu	21	22	23	24	25	26	27	28	29	30
Chọn	C	C	B	C	A	A	D	A	B	A
Câu	31	32	33	34	35	36	37	38	39	40
Chọn	C	B	D	C	A	A	B	C	C	B

Part 1. Read the following advertisement and choose the option that best fits each of the numbered blanks from 1 to 6.

Feeling sluggish? 😞 Let VitalityBoost revitalize you! 💪

Tired of feeling (1) _____ after a long day? Do you struggle (2) _____ low energy levels? 😞

Introducing VitalityBoost, the all-natural supplement designed to (3) _____ your energy and leave you feeling refreshed! ✨

Our unique blend of vitamins and minerals works (4) _____ to combat fatigue and improve mental clarity. 😊

Stop (5) _____ of a more energetic you! Start living it with VitalityBoost! 🚀

Order your first bottle today and experience the difference VitalityBoost can make for you! 😊 Especially if you're one of those people (6) _____ always on-the-go! 🏃🏃



- | | | | | |
|--------------------|-----------------------|-----------------------|--------------------|-----------------------|
| Question 1: | A. drain | B. drained | C. draining | D. drainedly |
| Question 2: | A. at | B. on | C. with | D. for |
| Question 3: | A. boost | B. rise | C. raise | D. enlarge |
| Question 4: | A. harmony in perfect | B. in perfect harmony | C. harmony perfect | D. perfect in harmony |
| Question 5: | A. to dreaming | B. dream | C. dreaming | D. to dream |
| Question 6: | A. are | B. who is | C. being | D. who are |

Part 2. Read the following leaflet and choose the option that best fits each of the numbered blanks from 7 to 12.

Unleash Your Inner Festival Fanatic with "The Ultimate Guide to Music Festivals"!

Ready to dive headfirst into the exhilarating world of music festivals? This guide is your passport to unforgettable experiences! Learn how to choose the perfect festival for your (7) _____, whether you crave booming bass or soulful melodies. We'll cover (8) _____ aspect of festival-going, from securing tickets and packing essentials to navigating crowds and staying safe. Discover insider tips on camping like a pro and making the most of (9) _____ festival budget. Don't (10) _____ on crucial info like setting up camp or staying hydrated – we've got you covered! Learn the unspoken rules of festival etiquette and connect with fellow music lovers. This guide will transform you from a newbie to a seasoned festival-goer, ready to embrace the electric atmosphere and create memories that will last a lifetime. Get your copy today and (11) _____ for an epic adventure! Available (12) _____.

- | | | | | |
|---------------------|-------------|-------------|-----------|-------------|
| Question 7: | A. sound | B. taste | C. rhythm | D. hearing |
| Question 8: | A. all | B. each | C. every | D. many |
| Question 9: | A. our | B. their | C. her | D. your |
| Question 10: | A. carry on | B. stand by | C. put up | D. miss out |

- Question 11:** A. prevent B. pretend C. produce D. prepare
- Question 12:** A. by the other means B. within the next week C. at all major bookstores D. under the same conditions

Part 3. Choose the option that indicate the best arrangement of utterances or sentences to make a meaningful exchange or text in each of the following questions from 13 to 17.

- Question 13:** a. Sarah: I've heard great things about it. Maybe I'll have to try it myself!
 b. Maria: Thanks! It's the new Anastasia Beverly Hills "Soft Glam" palette. The pigment is amazing!
 c. Sarah: Wow, Maria, your eyeshadow looks incredible! What palette did you use?
- A. b - a - c B. b - c - a C. c - a - b D. c - b - a
- Question 14:** a. David: Well, even small movements require taking tons of pictures and adjusting the objects ever so slightly each time.
 b. Emily: Like what?
 c. Emily: Okay, good to know. Patience is key!
 d. David: It's a lot of fun, but be prepared for some tedious work!
 e. Emily: I'm thinking about trying stop motion animation. Any advice?
- A. c - a - b - e - d B. e - d - b - a - c C. d - e - b - c - a D. d - c - a - e - b
- Question 15:** Hi Tom,
 a. I recently found my old album, and it brought back so many memories!
 b. Remember how we used to collect stamps as kids?
 c. Maybe we can compare collections sometime!
 d. I have stamps from all over the world - even a few rare ones from the 19th century.
 e. It's amazing to think about the journeys these stamps have taken.
 Best,
 Alice
- A. e - d - b - c - a B. b - a - d - e - c C. c - b - a - d - e D. e - b - d - a - c
- Question 16:** a. From vintage finds to modern designs, the possibilities for accessorizing are endless.
 b. They can add a pop of color, a touch of elegance, or a dash of personality.
 c. Whether it's a bold statement necklace or a delicate pair of earrings, accessories have the power to transform an outfit.
 d. Embrace the art of accessorizing and express your unique individuality.
 e. A simple accessory can speak volumes about your personal style and taste.
- A. b - c - a - e - d B. e - c - b - a - d C. b - e - d - c - a D. d - e - c - a - b
- Question 17:** a. This annual gathering is a testament to the power of family to create lasting memories and strengthen bonds across generations.
 b. The annual Johnson family picnic, held every July at Central Park, has become a beloved tradition.
 c. Children race through the park, their laughter echoing as they chase after brightly coloured kites, while adults reminisce and share stories over plates piled high with food.
 d. The youngest generation, toddlers with sticky fingers and infectious giggles, are showered with affection, embodying the enduring spirit of family.
 e. Sprawled across picnic blankets beneath the shade of oak trees, over fifty family members, spanning three generations, gather to celebrate.
- A. c - a - d - e - b B. e - b - c - d - a C. b - e - c - d - a D. c - e - d - b - a

Part 4. Read the following passage about Rio de Janeiro and choose the option that best fits each of the numbered blanks from 18 to 22.

Rio de Janeiro, affectionately dubbed "The Marvelous City," is a vibrant tapestry of natural beauty and urban dynamism. Nestled between lush mountains and the azure Atlantic Ocean, Rio's iconic landscape is instantly recognizable. (18) _____, stands atop Corcovado Mountain, his outstretched arms seemingly embracing the sprawling metropolis below. Sugarloaf

Mountain, accessible by cable car, offers equally breathtaking panoramic views of the city's famed beaches, including Copacabana and Ipanema.

Beyond its stunning scenery, Rio pulsates with an infectious energy, most notably evident during its world-renowned Carnival. Held annually in the lead-up to Lent, (19) _____, transforms the city into a sea of music, dance, and revelry. Samba, Brazil's signature musical genre, infuses daily life in Rio, from neighborhood bars to the steps of the Selarón Stairs, a vibrant public art installation (20) _____.

(21) _____. Poverty and inequality persist, and the city has struggled to address issues of crime and violence. However, the spirit of the Carioca, as Rio's residents are known, remains resilient. Known for their warmth, humor, and zest for life, Cariocas contribute to the city's unique cultural fabric, a blend of African, European, and indigenous influences.

(22) _____. It is a place where natural splendor coexists with urban grit, where joy and hardship are intertwined, and where the rhythms of samba provide a constant, pulsing heartbeat. For those fortunate enough to experience its magic, Rio de Janeiro truly lives up to its moniker, "The Marvelous City."

- Question 18:** A. Constructed in 1931, underneath the city, Christ the Redeemer
B. Towering over the city, Christ the Redeemer, which was completed in 1931
C. Christ the Redeemer, finished in 1931, that was built across the city
D. Across the city, built in 1931, is Christ the Redeemer
- Question 19:** A. the solemn ceremonies, represented by modest parades and respectful outfits
B. these quiet festivities, popular for the simple floats and traditional costumes
C. that silent commemoration, characterized by unadorned processions and subdued garments
D. this raucous celebration, marked by elaborate floats and flamboyant costumes
- Question 20:** A. although it is avoided by most tourists
B. so it is not a place of interest for tourists
C. where tourists rarely choose to visit
D. that has become a popular tourist destination
- Question 21:** A. Despite its undeniable allure, Rio, like many large cities, grapples with social and economic challenges
B. Besides its undeniable beauty, Rio, a typical large city, accepts social and economic difficulties
C. Because of its undeniable charm, Rio, unlike other big cities, overcomes social and economic hardship
D. In addition to its undeniable appeal, Rio, as a unique city, ignores social and economic problems
- Question 22:** A. Limited to the sun-drenched beaches and lively botecos (bars), Rio de Janeiro is a city of harmony and conformity
B. From the sun-drenched beaches to the lively botecos (bars), Rio de Janeiro is a city of contrasts and contradictions
C. Despite the sun-drenched beaches and lively botecos (bars), Rio de Janeiro is a city of consistency and resolutions
D. Within the shaded beaches and quiet pubs, Rio de Janeiro becomes a city of similarities and agreements

Part 5. Read the following passage about the ongoing nature of human evolution and choose the best answer to each of the following questions from 23 to 30.

The story of human evolution is profoundly [dynamic]. From our early ancestors in Africa to the modern humans spread across the globe, our lineage has been shaped by countless adaptations over millions of years. We developed bipedalism, freeing our hands for tool use. Our brains grew larger, enabling complex social structures and problem-solving abilities. Each change, driven by natural selection, equipped us to thrive in diverse environments and ultimately led to the emergence of Homo sapiens, our species, around 300,000 years ago.

While we often discuss human evolution in the past tense, it's crucial to remember that [it] is an ongoing process. Even today, our species continues to adapt to changing environments and lifestyles. For example, the persistence of lactase persistence, the ability to digest milk into adulthood, in certain populations demonstrates how cultural practices, such as

dairy farming, can influence our biology. Similarly, studies suggest that our immune systems are evolving in response to diseases, and our jaws and teeth are adapting to softer diets.

[Looking towards the future, predicting the trajectory of human evolution is a complex endeavor]. While natural selection remains a driving force, advancements in technology, medicine, and our understanding of genetics introduce new possibilities. Will our reliance on technology lead to physical changes, such as reduced muscle mass or altered sensory perception? Will medical interventions impact our genetic makeup and the traits passed down to future generations?

These questions remain open, but one thing is certain: human evolution is [unstoppable]. Just as our ancestors adapted to the challenges of their time, future generations will continue to evolve in response to the changing world around them. Understanding the forces shaping our species, both past and present, is not just an academic exercise but a crucial step in navigating the future and ensuring the continued success of Homo sapiens.

- Question 23:** Which of the following is NOT mentioned as a factor influencing human evolution?
- A. Increased exposure to sunlight B. Natural selection C. Cultural practices D. Advancements in technology
- Question 24:** The word "dynamic" in paragraph 1 is OPPOSITE in meaning to _____.
A. evolving B. complex C. static D. active
- Question 25:** The word "it" in paragraph 2 refers to _____.
A. crucial point B. human evolution C. past tense D. ongoing process
- Question 26:** Which of the following best paraphrases the [first sentence] in paragraph 3?
A. Past human evolution is easy to understand compared to future evolution.
B. Forecasting the future path of human evolution is a difficult task.
C. Looking back at human evolution is essential for predicting its future.
D. The future of human evolution is clearly defined and predictable.
- Question 27:** The word "unstoppable" in paragraph 4 could be best replaced by _____.
A. inevitable B. controllable C. preventable D. uncertain
- Question 28:** Which of the following is TRUE according to the passage?
A. Human evolution continues to affect modern humans.
B. Human evolution ceased with the emergence of Homo sapiens.
C. Technology has halted the process of human evolution.
D. Scientists can accurately predict the future of human evolution.
- Question 29:** In which paragraph of the passage does the writer use rhetorical questions to explore potential future evolutionary changes?
A. Paragraph 1 B. Paragraph 2 C. Paragraph 3 D. Paragraph 4
- Question 30:** In which paragraph of the passage does the writer emphasize the continuous nature of human evolution?
A. Paragraph 1 B. Paragraph 2 C. Paragraph 3 D. Paragraph 4

Part 6. Read the following passage about the importance of ethics in scientific research and choose the best answer to each of the following questions from 31 to 40.

Ethics play a crucial role in scientific research, guiding researchers to conduct their work with integrity and responsibility. [I] This includes adhering to ethical guidelines related to data collection, experimental design, and the treatment of human or animal subjects. [II] Neglecting ethical considerations can [lead to] skewed results, fabricated findings, and potentially

dangerous applications of scientific discoveries. [III] A strong ethical foundation helps ensure that research is conducted for the benefit of society and upholds the values of honesty and transparency. [IV]

The consequences of unethical scientific practices can be severe. The infamous Tuskegee Syphilis Study, for instance, withheld treatment from African American men with syphilis for decades, resulting in preventable deaths and suffering. | This| egregious violation of ethical principles not only caused immense harm to the participants and their families but also eroded public trust in scientific research, particularly within marginalized communities. Such incidents highlight the importance of robust ethical guidelines and oversight to prevent exploitation and protect vulnerable populations. Furthermore, unethical research can damage the credibility of the scientific community as a whole, making it more difficult for future researchers to gain funding and support for their work.

Ensuring ethical research requires a multifaceted approach, including stringent peer-review processes, transparency in data reporting, and clear guidelines for responsible conduct. Institutional Review Boards (IRBs) play a |decision-making| role in evaluating research proposals involving human subjects to ensure they meet ethical standards. These boards carefully consider the potential risks and benefits of the research, paying close attention to informed consent, confidentiality, and the protection of vulnerable groups. Moreover, fostering a culture of ethical awareness within the scientific community is vital. This involves educating researchers about ethical principles, encouraging open discussions about ethical dilemmas, and providing mechanisms for reporting unethical behavior without fear of reprisal.

|Ultimately, ethics serves as a compass, guiding scientific research toward responsible innovation and societal benefit|. By prioritizing ethical considerations, researchers can ensure that their work contributes to the advancement of knowledge while upholding the highest standards of integrity and respect for all stakeholders. A commitment to ethical principles is not merely a matter of compliance but a fundamental requirement for building and maintaining public trust in the scientific enterprise and ensuring that scientific progress truly serves the greater good.

Question 31: Where in paragraph 1 does the following sentence best fit?
Scientific advancements have the power to reshape our world, and it is essential that these advancements are pursued in a manner that benefits humanity and minimizes harm.

- A. [I] B. [II] C. [III] D. [IV]

Question 32: The phrase "lead to" in paragraph 1 could be best replaced by _____.

- A. give rise B. result in C. bring on D. cause of

Question 33: The word "This" in paragraph 2 refers to _____.

- A. Preventable suffering B. The Tuskegee Syphilis Study C. Unethical research D. Marginalized communities

Question 34: According to paragraph 2, which of the following is a consequence of unethical scientific practices?

- A. Funding for new research
B. Stringent peer review
C. Erosion of public trust
D. Transparency in reporting

Question 35: Which of the following best summarises paragraph 3?

- A. Ethical oversight relies primarily on transparent reporting, researcher education, and IRB involvement. It emphasizes confidentiality and informed consent with human subjects.
B. Scientific integrity depends on diverse factors, from public trust to ethical conduct, plus researcher education. IRBs ensure proposals protect vulnerable groups during the decision process.
C. Ethical research necessitates multiple approaches, including rigorous peer review, transparent reporting, and ethical guidelines. IRBs play a key role in evaluating research proposals involving human subjects to ensure ethical standards are met.
D. Protecting vulnerable groups is paramount in research ethics, which also encompasses IRB reviews

and consent. Ethical awareness among researchers and strict guidelines are key.

Question 36: The word "decision-making" in paragraph 3 is OPPOSITE in meaning to _____.

- A. informational B. implementational C. foundational D. observational

Question 37: Which of the following is TRUE according to the passage?

- A. Ethical guidelines are primarily concerned with data collection and experimental design.
B. IRBs' main function is to secure financial support for ethical research projects.
C. The Tuskegee Syphilis Study promoted trust in scientific research among minorities.
D. Ethical breaches can have detrimental effects on the credibility of the scientific community.

Question 38: Which of the following best paraphrases the |first sentence| in paragraph 4?

- A. Overall, ethics functions as a guide, navigating scientific work towards responsible progress and beneficial impacts.
B. In essence, ethical principles guide scientific research toward responsible innovation and societal well-being.
C. Essentially, ethics offers researchers a roadmap, steering scientific endeavors toward positive societal outcomes.
D. Finally, ethics provides direction, leading scientific study to responsible breakthroughs and public gain.

Question 39: Which of the following can be inferred from the passage?

- A. Researchers prioritize ethical considerations primarily to comply with regulations, not for societal benefit.
B. The Tuskegee Syphilis Study is the sole reason for the establishment of ethical guidelines in research.
C. Maintaining ethical standards in research is crucial for securing public trust and future research funding.
D. Ethical dilemmas rarely occur in scientific research due to the presence of stringent oversight mechanisms.

Question 40: Which of the following best summarises the passage?

- A. Maintaining ethical standards protects vulnerable groups and builds public trust in scientific research. Cases like the Tuskegee Syphilis Study underscore the consequences of unethical behavior, requiring careful consideration of risks and benefits in research proposals.
B. Ethical considerations in scientific research involve data integrity, participant safety, and public trust. Unethical actions damage the credibility of science, while responsible conduct, including IRB reviews and ethical training, promotes valuable scientific advancements.
C. Scientific research must prioritize ethical guidelines related to data collection and experimental design. The Tuskegee Syphilis Study demonstrates the harm caused by unethical practices, highlighting the need for IRBs and fostering ethical awareness among researchers.
D. Ethics are fundamental to scientific research, ensuring integrity and responsibility in practices. Unethical conduct, exemplified by the Tuskegee Syphilis Study, erodes public trust and necessitates robust oversight, including IRBs and transparent reporting, to safeguard vulnerable populations and promote societal benefit.

----- THE END -----

ĐÁP ÁN

Câu	1	2	3	4	5	6	7	8	9	10
Chọn	B	C	A	B	C	D	B	C	D	D
Câu	11	12	13	14	15	16	17	18	19	20
Chọn	D	C	D	B	B	B	C	B	D	D
Câu	21	22	23	24	25	26	27	28	29	30
Chọn	A	B	A	C	B	B	A	A	C	B
Câu	31	32	33	34	35	36	37	38	39	40
Chọn	A	B	B	C	C	B	D	B	C	D